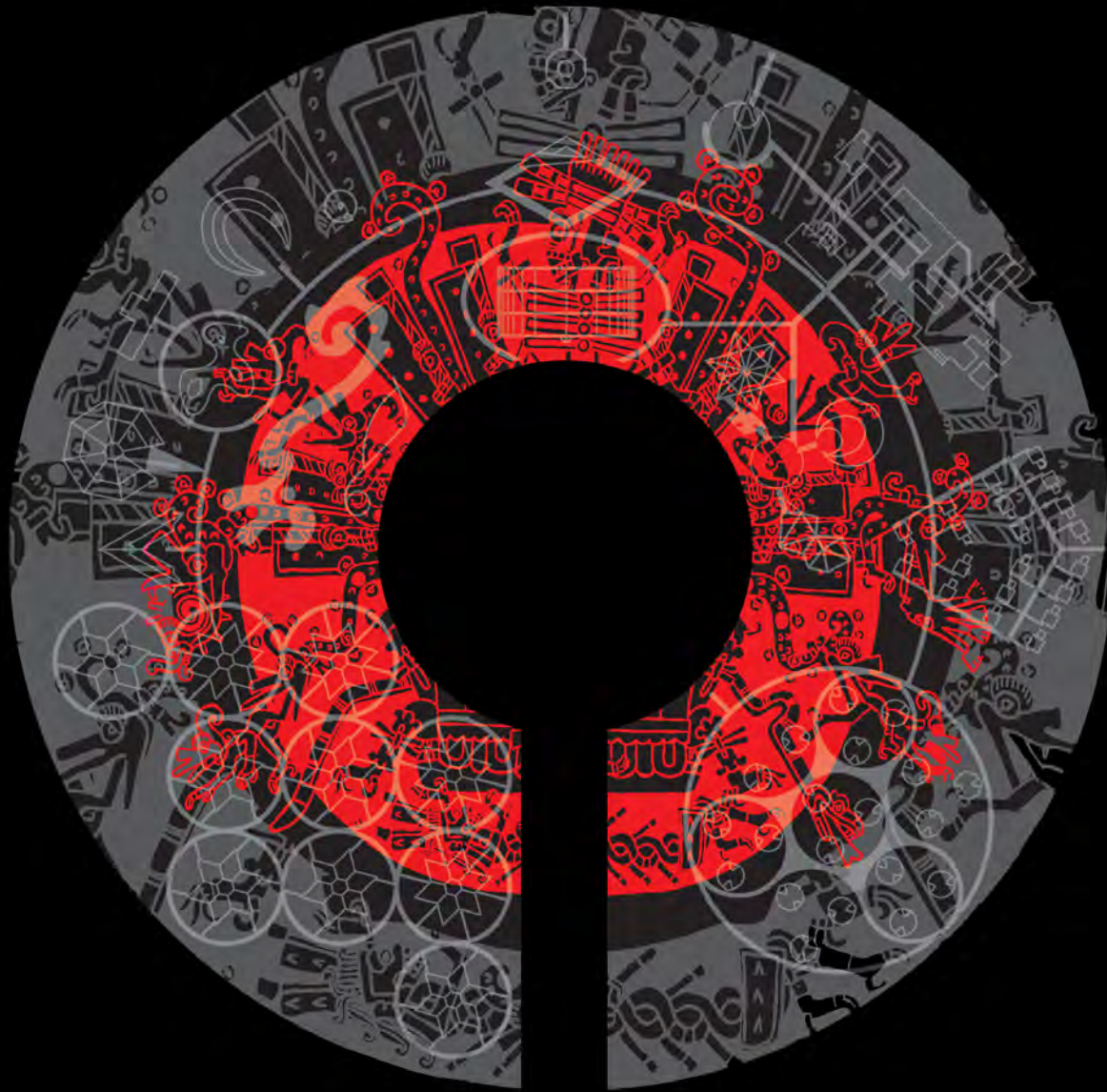




the key  
gateway to paradise



the mystery  
the mayan prophecy



2012+

the new awakening



OZEN COCOM

ECOVILLAGE

PLAYA DEL CARMEN · RIVIERA MAYA · MEXICO

O Z E N C O C O M  
E C O V I L L A G E  
PLAYA DEL CARMEN · RIVIERA MAYA · MEXICO



## introduction

our eco village project is on a 19 hectares forest land with a cenote as the heart centre surrounded by beautiful tropical gardens for zazen sitting and walking pathways this unique village is conceived in a mystical mayan circle as an oasis for creative arts crafts music and dance, mayan wisdom, eastern ayurveda, yoga, vipassana, meditation and silent retreat for the science of inner transformation this eco development will offer residents and visitors the experience of nature, silence, tranquility, meditateness and a compassionate space for growth and flowering of human consciousness

## project development

we plan to complete the project in 2 to 3 years but the creative process of developing the eco village will continue as we grow we have many volunteers from mexico, india, america, spain, portugal, italy, england, germany, holland, austria, russia, ukraine, latvia, japan, korea sharing their ideas and offering their participation out of their love this is an organic grassroot movement which is the beauty of an eco village creation process and we invite people to add their creative ideas to our team gathering in playa del carmen and welcome their participation in the process of its development



## **our vision**

### **inner science mystery school & training courses**

we are creating an inner science mystery school where we will offer ancient mayan traditions, buddhist vipassana, tibetan teachings, indian ayurveda, yoga, patanjali yoga, pranayama, healing panchkarma

we will also offer meditations and therapies like mystic rose, born again, no mind, painting group, breath, prana healing, primal, work as meditation

all therapies and meditations will be offered for free

we accept donations out of gratitude

### **meditation**

various core methods of meditations like vipassana, zazen, kundalini, nadabrahma, dynamic, gourishankar, devavani, natraj, devavani, mandala, whirling, gibberish and transformative meditation techniques for free

understanding meditateness in the world and work as meditation in day to day life

### **discourses & teachings**

enlightened wisdom through daily audio and video discourses

on teachers and masters like osho, buddha, mahavira, jesus, krishna, shiva, upanishads, the geeta, patanjali, zarathustra, nanak, kabir, meera, farid, gorakh, nagarjuna, sufis, bauls, hassids, lao tzu, chuangtzu, zen masters, j.krishnamurti, ramana maharishi, ramakrishna, sai baba, meherbaba, gurdjieff

festivals, carnivals, meditation events and expressions of the heart with kirtan celebrations and evening gatherings with live discourses and dance

we celebrate sannyas initiation & mala, understanding sannyas as a way of living in the world with meditative awareness

### **maya mística**

a centre for revival of the ancient traditions like sacred fire dance, trance dance, huehuetl drum rhythm, herbal wholeness, purifying soul rituals, mayan healing circle, the wisdom of the medicine man, quetzalcóatl kundalini, wise men tatas, toltec therapeutic healing, tlatoani divine voice meditation, shamanic ceremonies



## **wholeness spa & bodywork / yoga**

a wholeness spa with a temazcal, sauna and steam surrounding a meandering pool blending local palapa style roofs blending with contemporary architectural design the village will have a massage and bodywork training center, deep tissue massage, rebalancing, japanese shiatsu, acupuncture, reflexology, reiki, aromatherapy, craniosacral trainings and sessions, a kerala ayurvedic centre with ayurvedic, thai, balinese and swedish massage, a yoga centre with patanjali yoga and pranayama classes and mayan bodywork and other healing therapies

## **arts village**

the arts village will be in palapas and open light canopies blending with the natural environment using eco friendly materials  
offering a variety of creative arts in an interactivity space into one melting pot

## **arts & handicrafts**

a creative arts center experimenting with different arts and crafts like painting, sculpture, drawing, calligraphy and various crafts are offered and taught as ceramic pottery, wood carving, bamboo work, weaving, glass blowing  
we will invite local artisans to train and teach their arts and crafts  
offer employment and encourage training in our handicrafts projects to the local villagers specially women to develop handicraft and earn through it

## **dance & music / recording studio**

dance forms from different cultures and performances  
learning a variety of musical instruments  
inviting new age musicians from around the world to create live fusion music, concerts and events  
recording facilities to create music for meditation and offering marketing support

## **martial arts school**

various body awareness techniques taichi, kungfu, judo, aikido, jujitsu, archery are available for learning and training

## **library**

our library will offer books, videos, audio discourses and meditation music free



## **ecology & plantation**

with knowledge of our biologists and landscape designer we will bring together valuable regional botanical species to enhance our local ecosystem, beautifying and harmonizing our natural forest and cenote

## **tree plantation**

planting a variety of trees like red cedar parota ficus epiphytes palms

## **fruit plantation**

planting chickoo breadfruit guava papaya pineapple mango banana coconut bettlenut arecanut watermelon

## **greenhouse & garden tropical plants**

we will plant a large variety of orchids, ferns and tropical plants

## **herb and plant nursery**

experimenting with nature and learning to understand plants and herbs and various health and healing secrets directed by local mayan biologists

## **spice farm**

nutmeg cinnamon cardamom clove ginger garlic turmeric blackpepper

## **natural oils**

plants will be grown to extract medicinal oils and produce oils for aroma therapy

## **organic agro health food**

to formulate, grow and to distribute health foods

to understand food diet and health

natural oils extraction to produce medicinal oils and oils for aroma therapy

## **eco concept designs & environment**

research design for eco housing and sustainable solutions for eco friendly projects

## **eco project**

solar energy panels and alternative energy sources

rainwater harvesting ponds and sprinkler systems

recycling of organic waste for fertilizers

organic compost manure units

use of environmental friendly materials





## detox zone

as our village offers ayurveda health yoga fitness and detoxification courses we do not allow smoking drinking alcohol or any form of drugs or intoxication we are a health conscious vegetarian community

## transparency & accountability

the eco village will earn through selling creative art and handicrafts from the arts village, the music lab and health food division

loving donations for spreading this vision will be welcomed and used wisely for the growth of seekers and for spreading our vision to the world

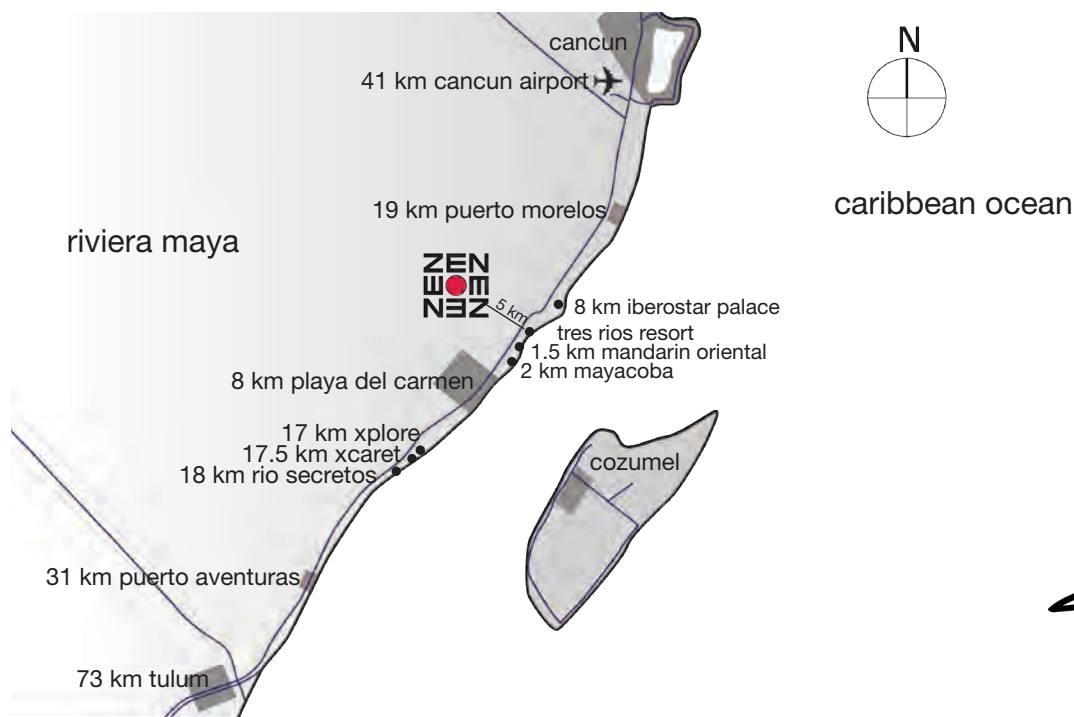
## our values

the ozen cocom is a free space for all seekers offering freedom of expression and exploration of human values for inner growth

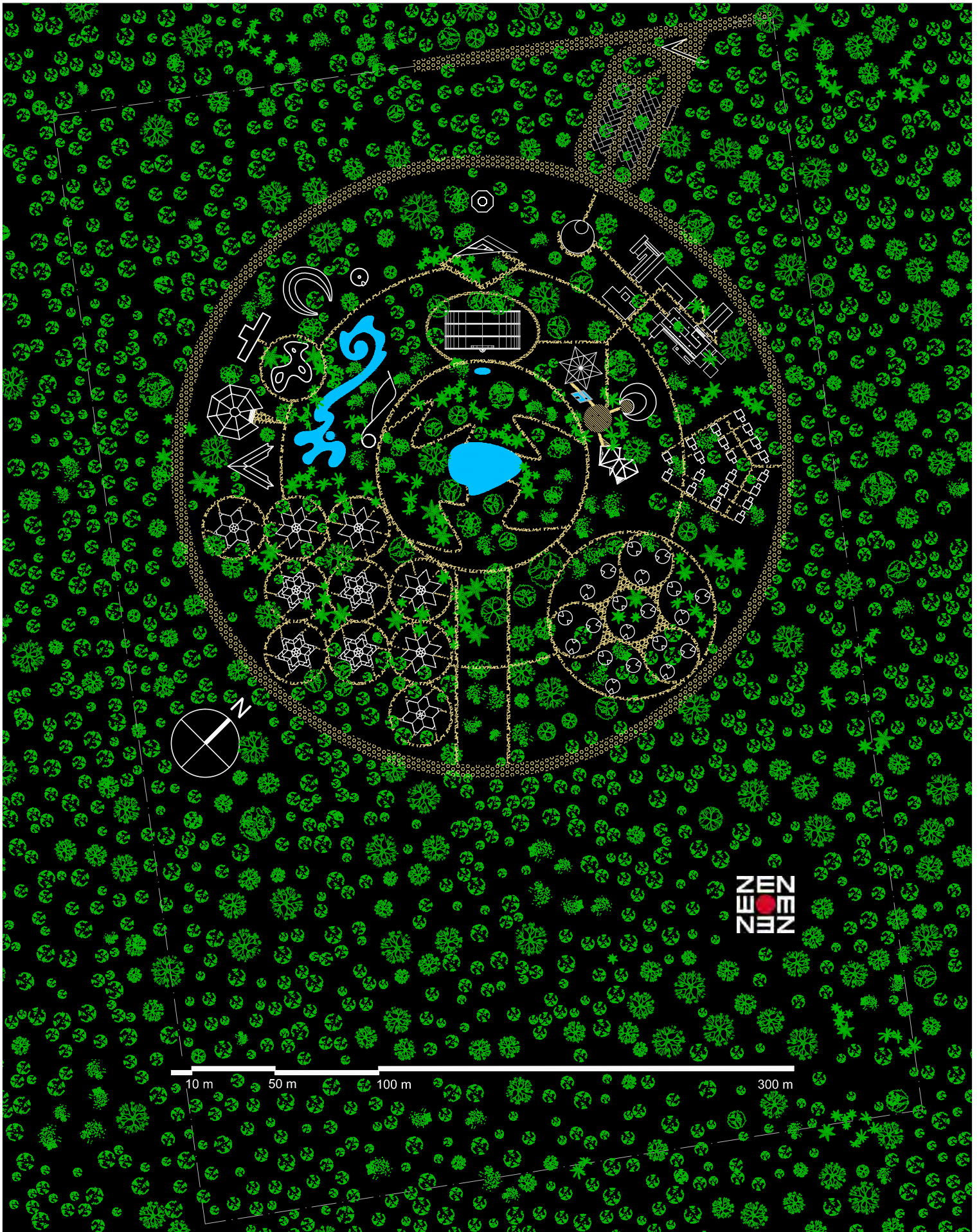
we accept all spiritual beings and masters of different paths and offer a loving human space for expression of their being and their realization

we will create the silent circle of friends where compassion and wisdom of silent and sincere sannyasins will act as gentle guides

entry to ozen cocom village will be free for all with love and openness

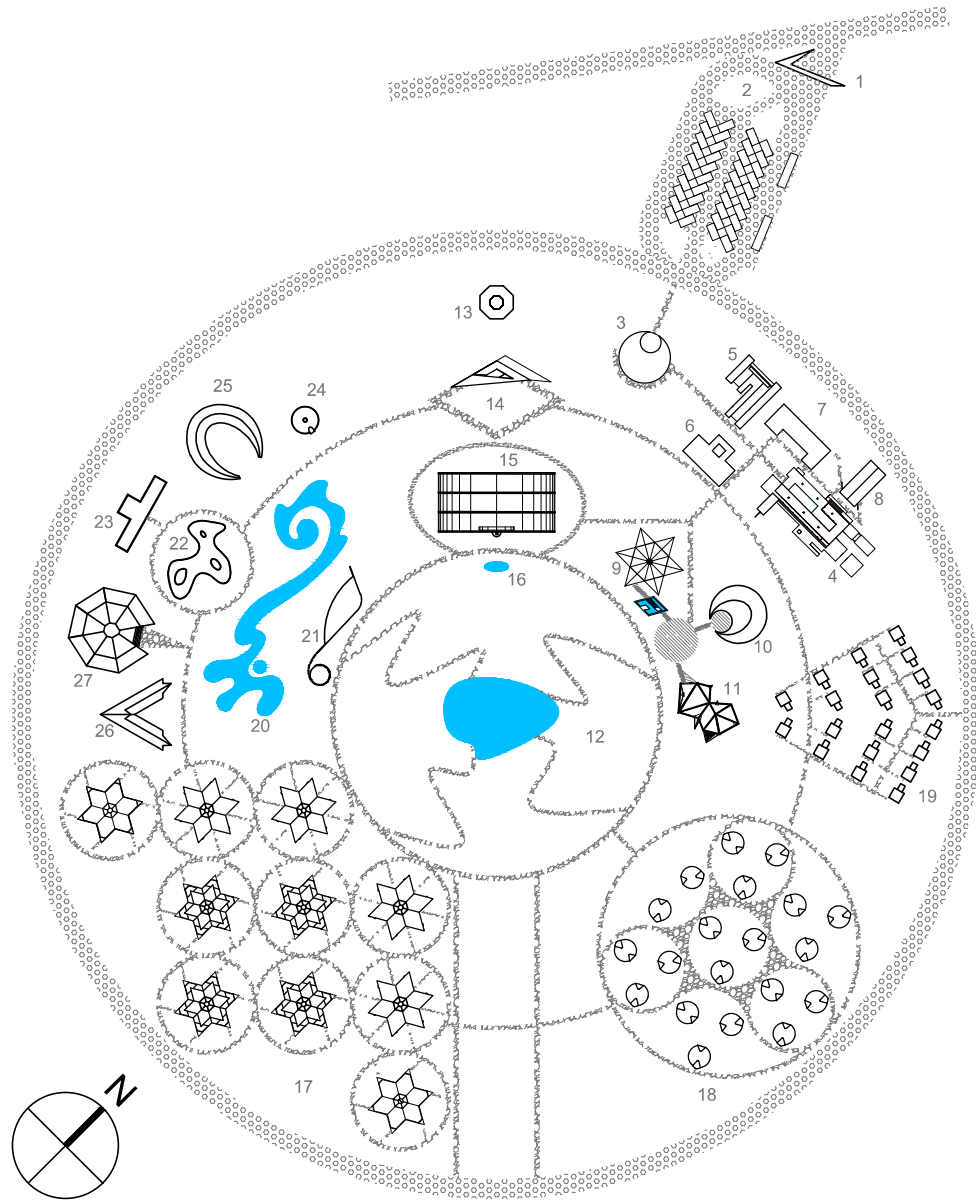






10 m 50 m 100 m 300 m

ZEN  
ZEN

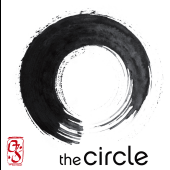
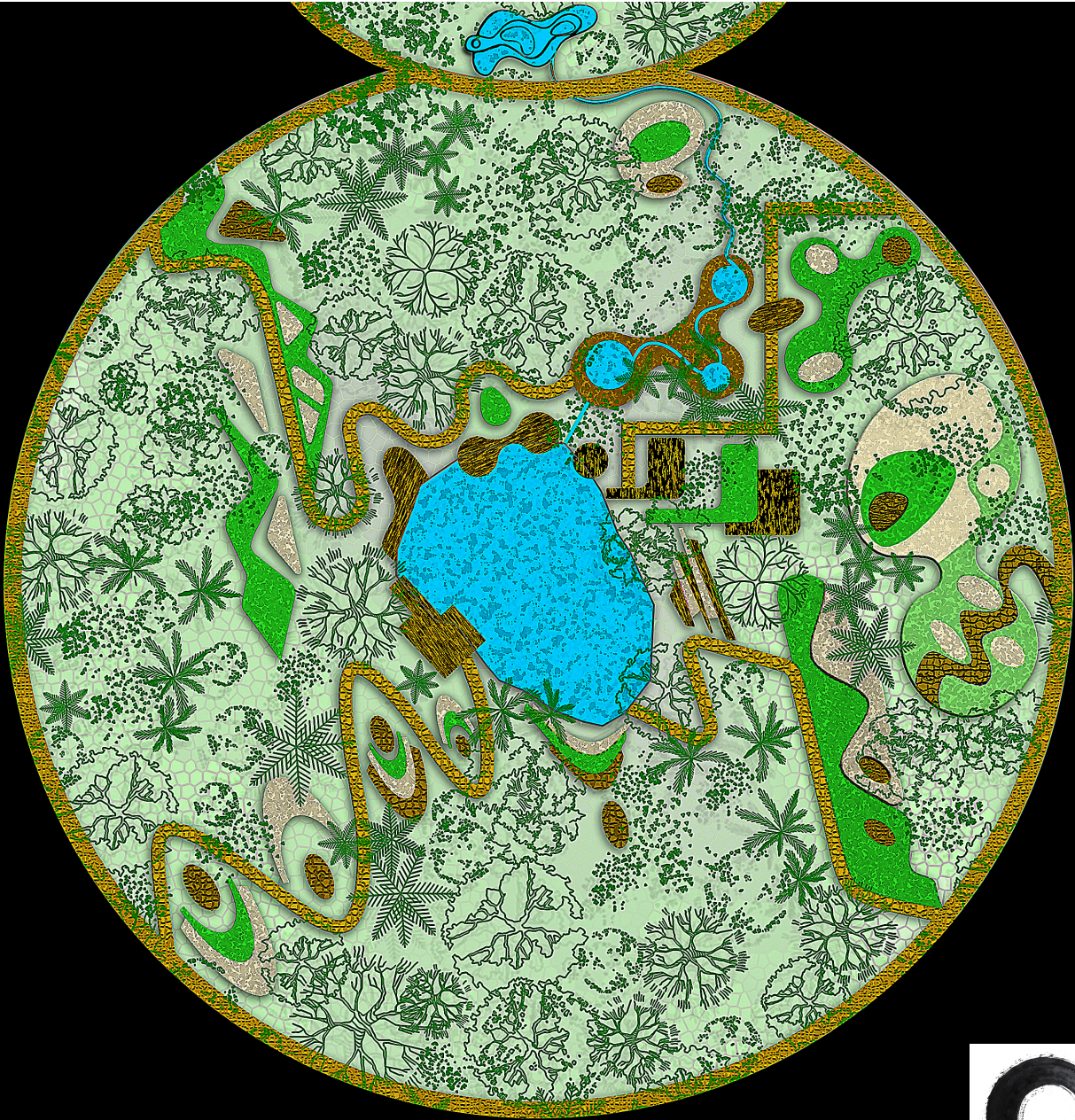


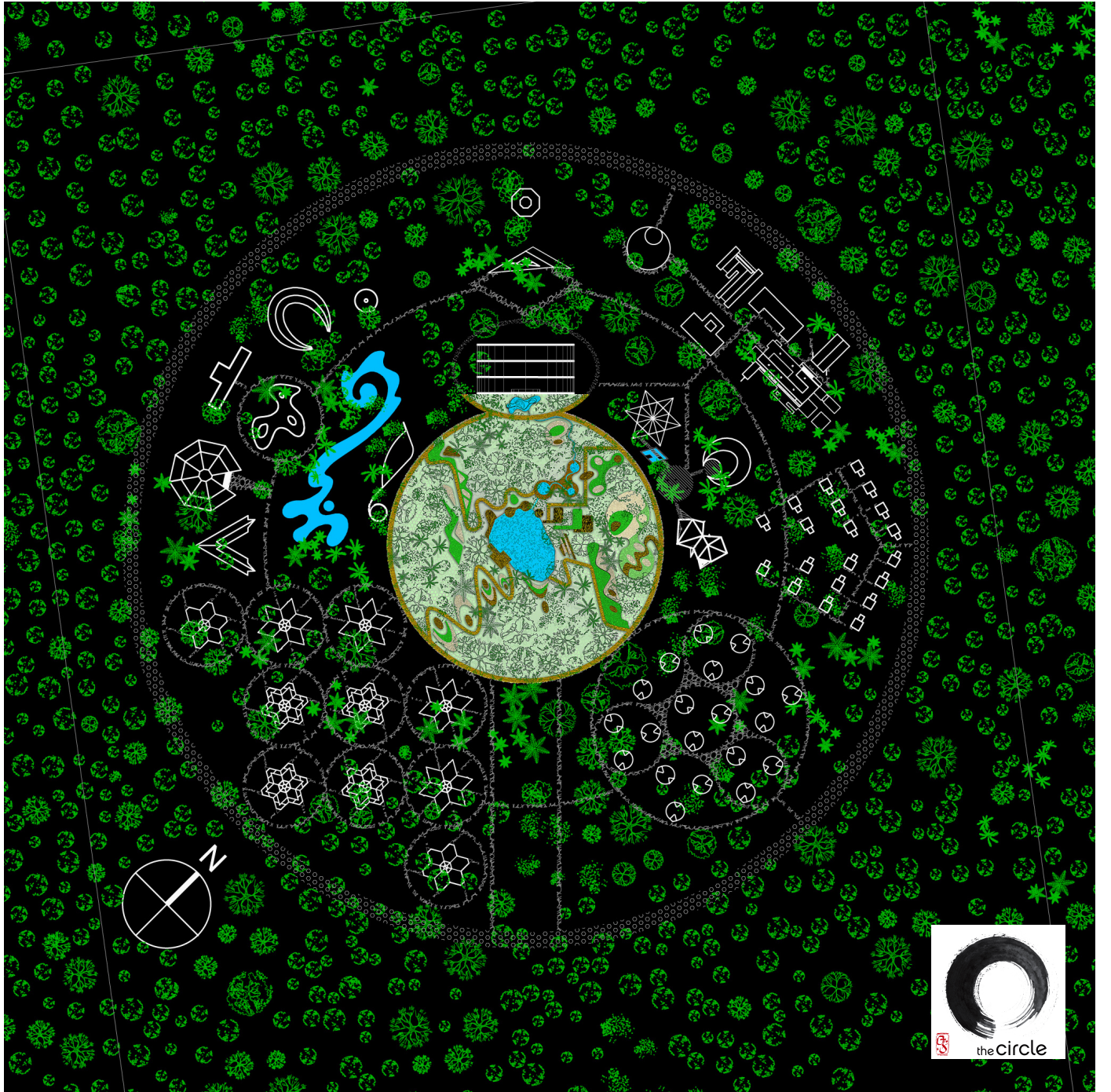
- |    |                    |    |                        |
|----|--------------------|----|------------------------|
| 1  | entrance           | 14 | ZAZEN                  |
| 2  | parking            | 15 | BUDDHA HALL            |
| 3  | WELCOME CENTRE     | 16 | WATERFALL              |
| 4  | DINNING HALL       | 17 | STAR & HIVE residences |
| 5  | ASIAN restaurant   | 18 | CONE studios           |
| 6  | ITALIAN restaurant | 19 | CUBE studios           |
| 7  | main kitchen       | 20 | zorba zing POOL        |
| 8  | bathrooms          | 21 | EQUINOX hall           |
| 9  | STAR palapa        | 22 | SPA                    |
| 10 | FULL MOON palapa   | 23 | bathrooms              |
| 11 | ARTS centre        | 24 | TEMAZCAL               |
| 12 | CENOTE & GARDEN    | 25 | CRESCENT MOON massage  |
| 13 | MARTIAL ARTS       | 26 | TRIAx massage          |
|    |                    | 27 | OCTAGON groups         |











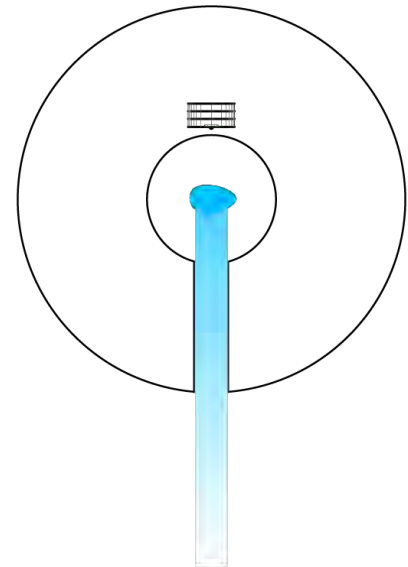


## ozen cocom property

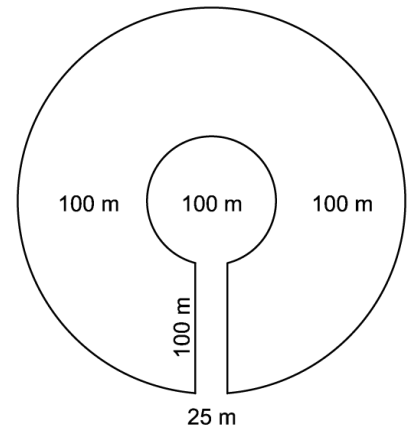
star cottage	24 un	50 m <sup>2</sup>
hive cottage	24 un	57 m <sup>2</sup>
hive studio	12 un	29 m <sup>2</sup>
cube studio	20 un	16 m <sup>2</sup>
cone studio	20 un	27 m <sup>2</sup>
kitchen		130 m <sup>2</sup>
dinning hall		637 m <sup>2</sup>
asian restaurant		117 m <sup>2</sup>
mexican restaurant		88 m <sup>2</sup>
italian restaurant		116 m <sup>2</sup>
indian restaurant		66 m <sup>2</sup>
bathrooms		78 m <sup>2</sup>
star palapa		200 m <sup>2</sup>
full moon palapa		213 m <sup>2</sup>
arts palapa		175 m <sup>2</sup>
welcome centre		169 m <sup>2</sup>
buddha hall		500 m <sup>2</sup>
zazen		127 m <sup>2</sup>
martial arts		87 m <sup>2</sup>
pool		572 m <sup>2</sup>
spiral wall		153 m <sup>2</sup>
crescent moon		238 m <sup>2</sup>
triangle palapa		133 m <sup>2</sup>
octagon		388 m <sup>2</sup>
temazcal		55 m <sup>2</sup>
bathrooms spa		134 m <sup>2</sup>
freeform spa		240 m <sup>2</sup>

<b>total built up area</b>		<b>7427 m<sup>2</sup></b>
parking 40 cars, 4 buses		2160 m <sup>2</sup>
road & pathways		12258 m <sup>2</sup>

cenote		600m <sup>2</sup>
cenote garden		7250 m <sup>2</sup>
inner circle zone		7850 m <sup>2</sup>
outer circle zone		70685 m <sup>2</sup>
<b>property 18.7 hectares</b>		<b>187304 m<sup>2</sup></b>



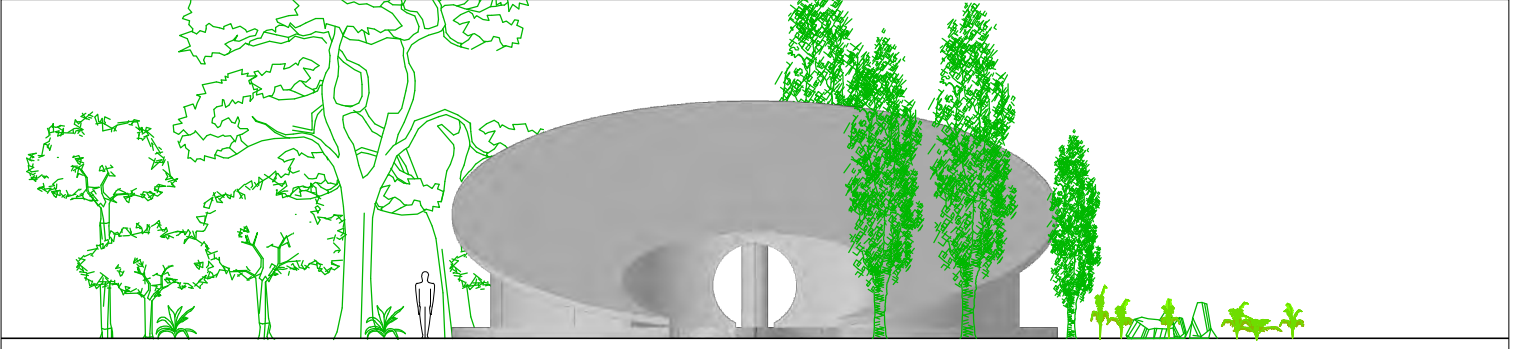
subterranean river & cenote  
alignment with buddha hall



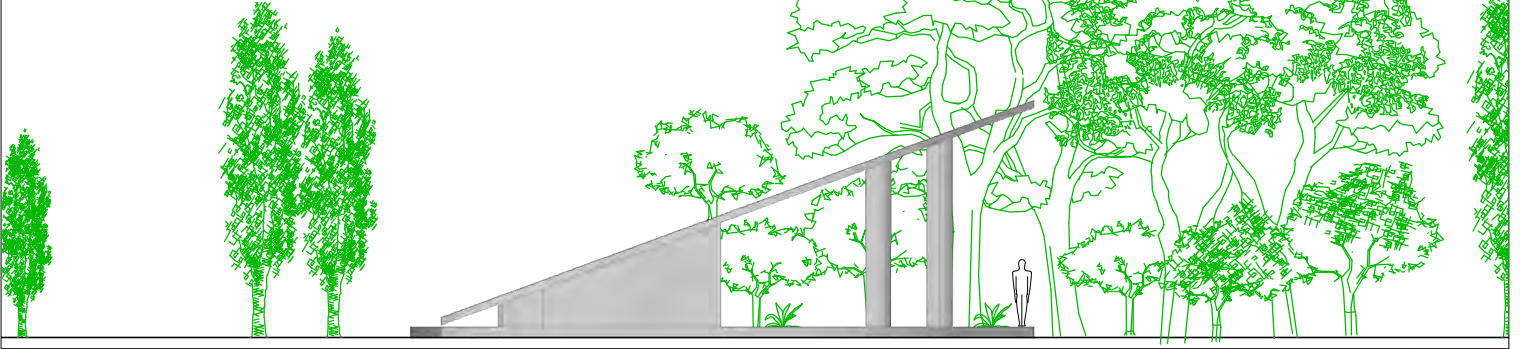
proportions



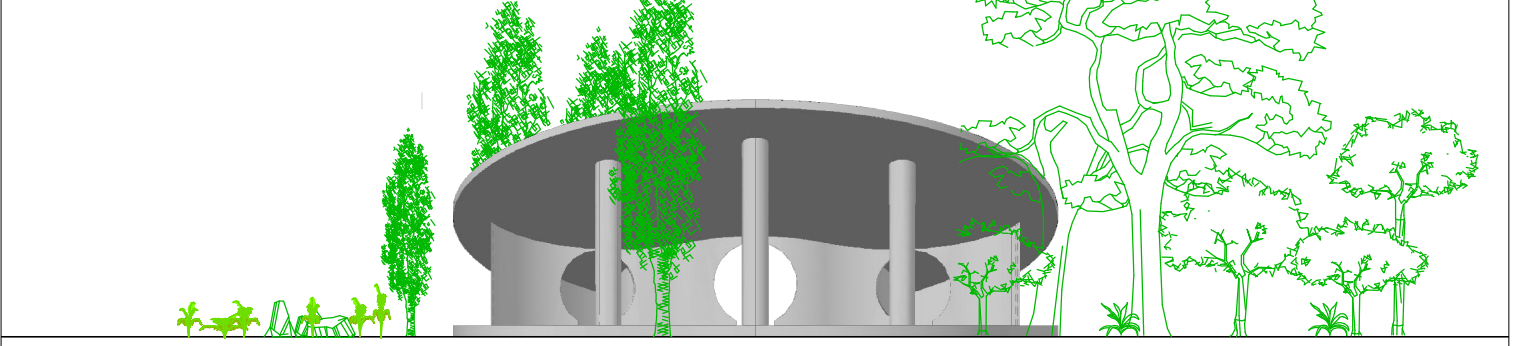
entrance view



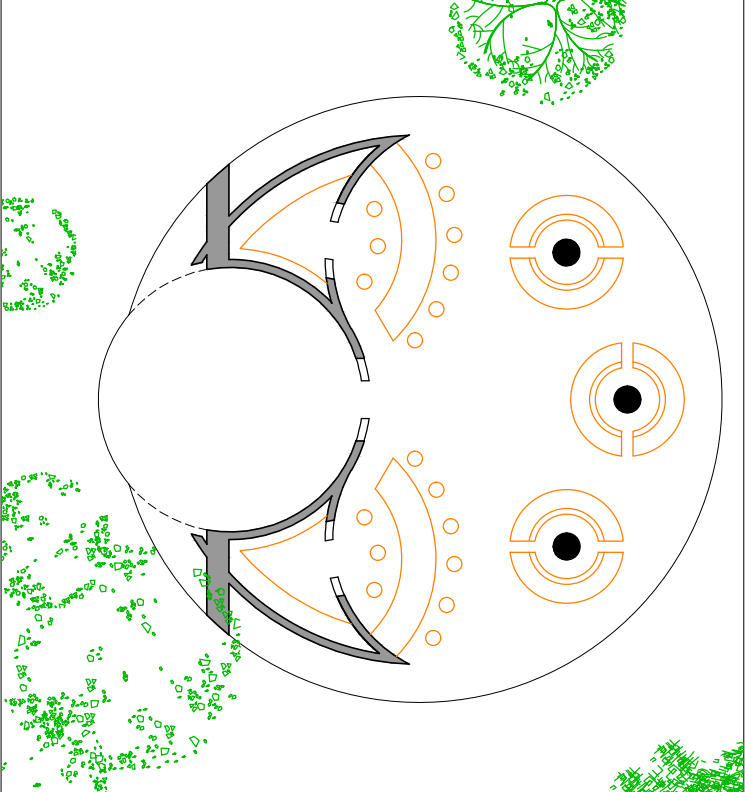
side view



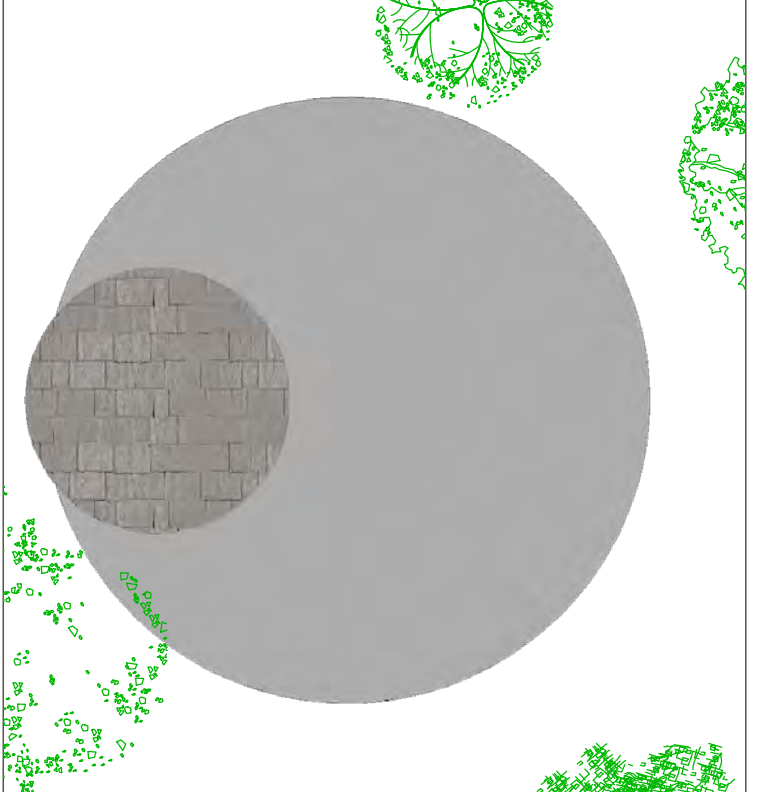
front view



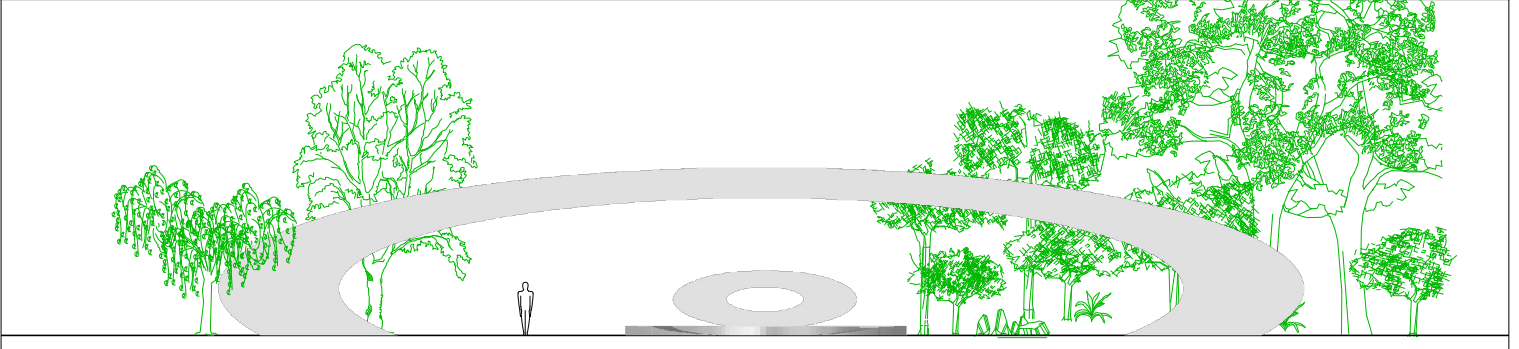
floor plan



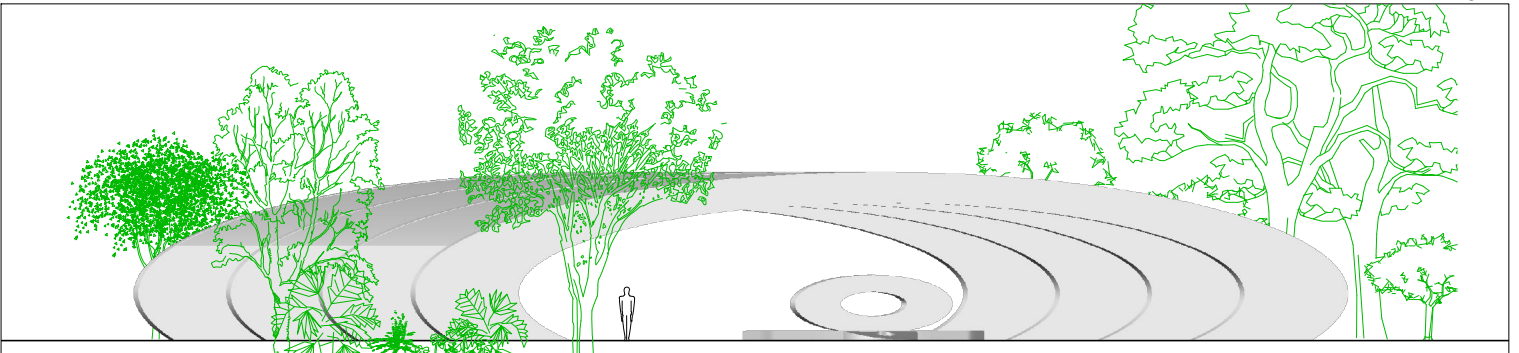
roof top



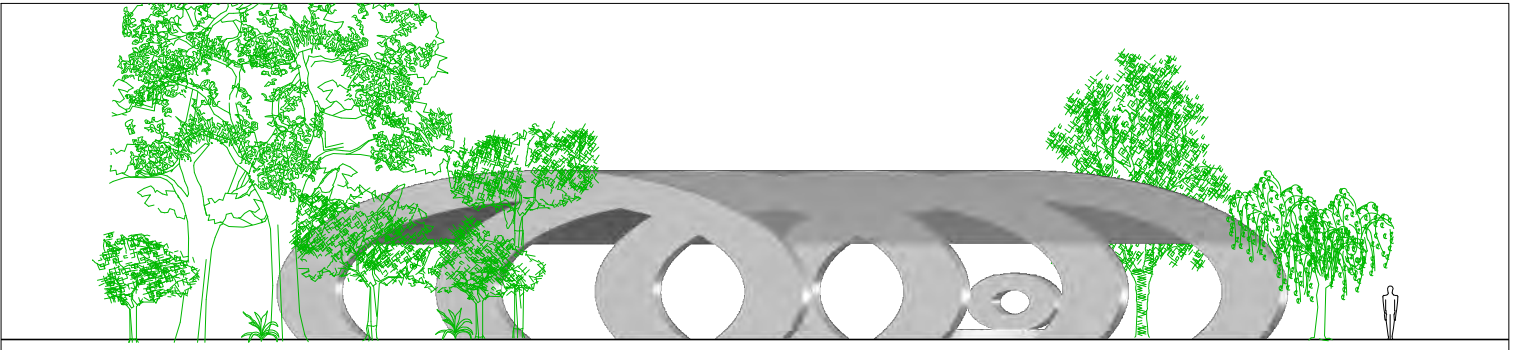
entrance view



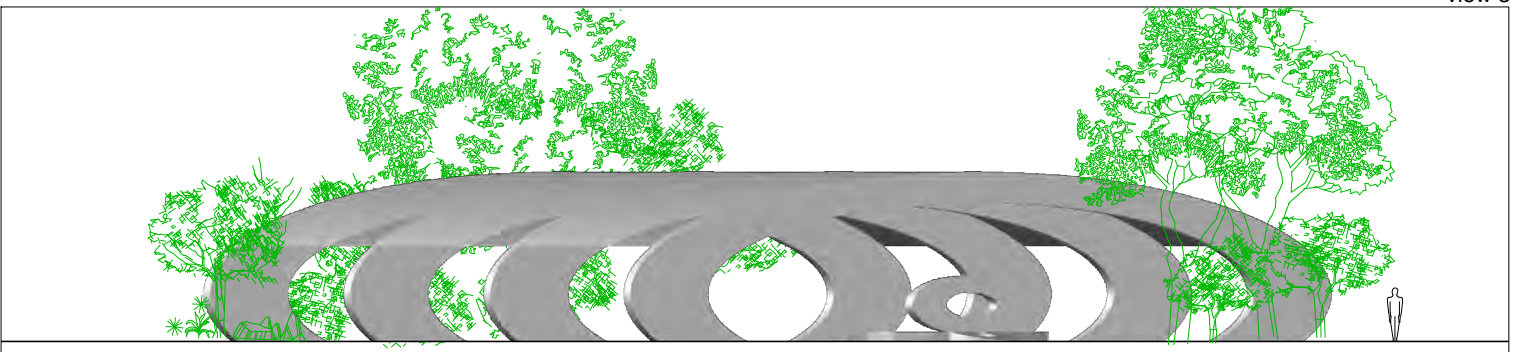
view 1



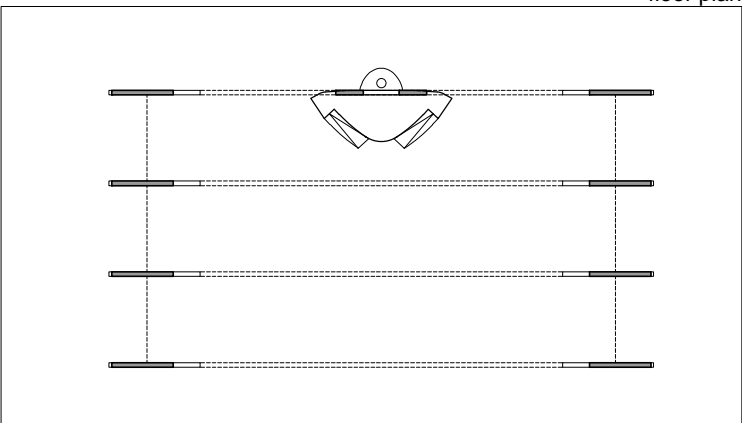
view 2



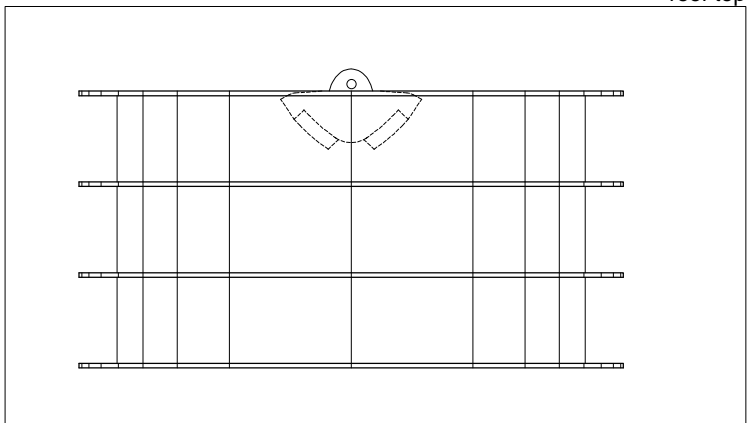
view 3



floor plan



roof top

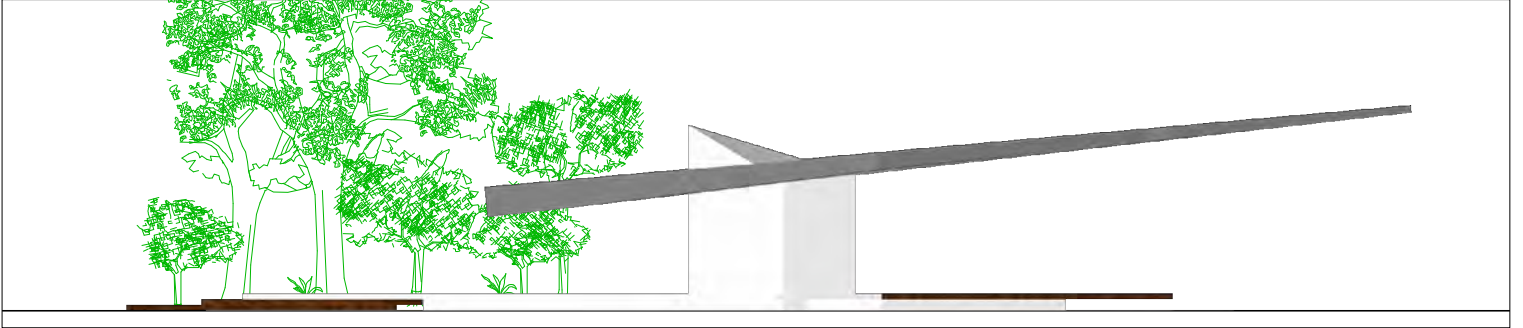


430 m<sup>2</sup>

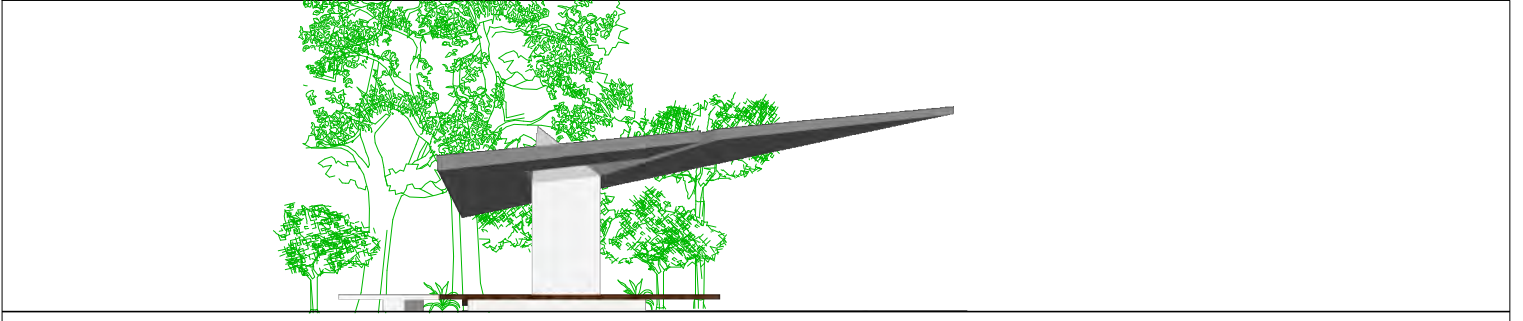
buddha hall



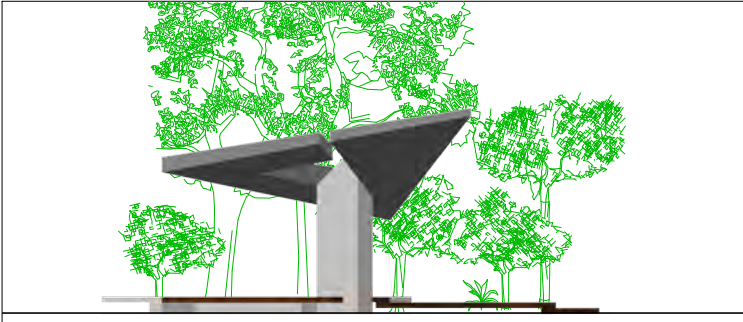
view 1



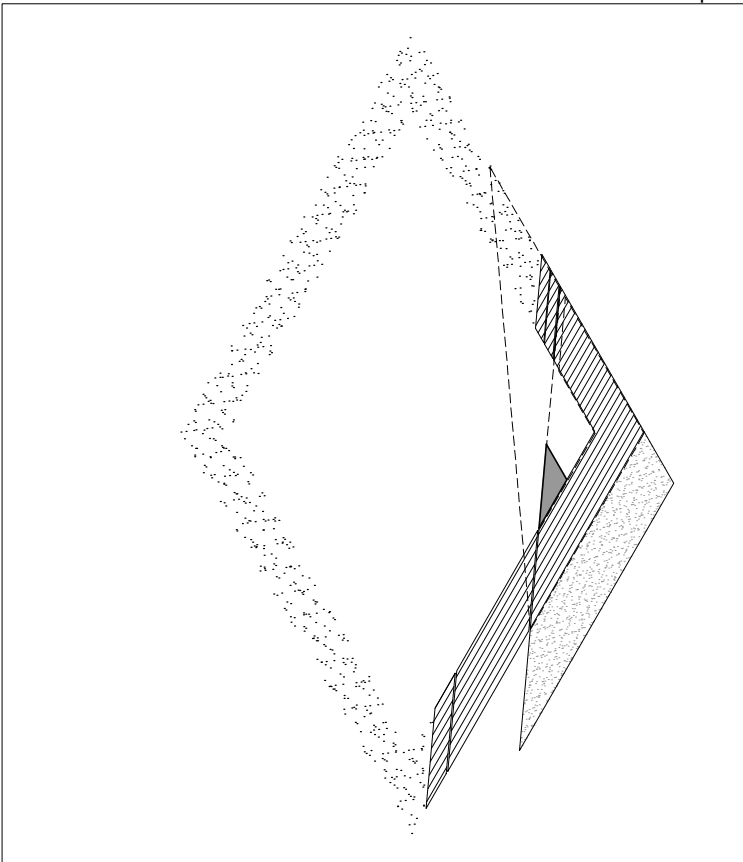
view 2



view 3



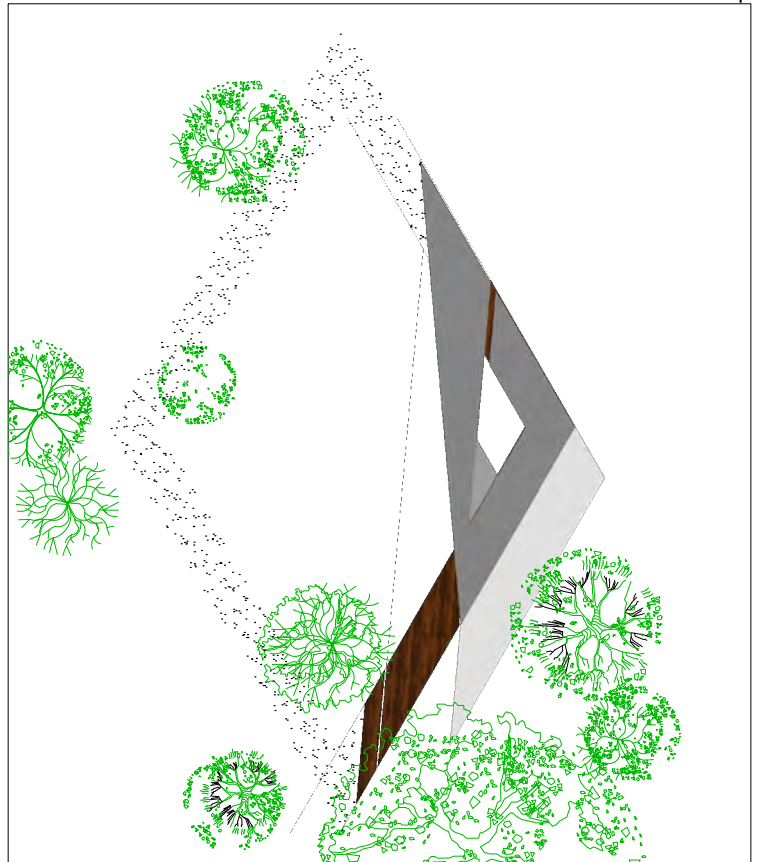
floor plan



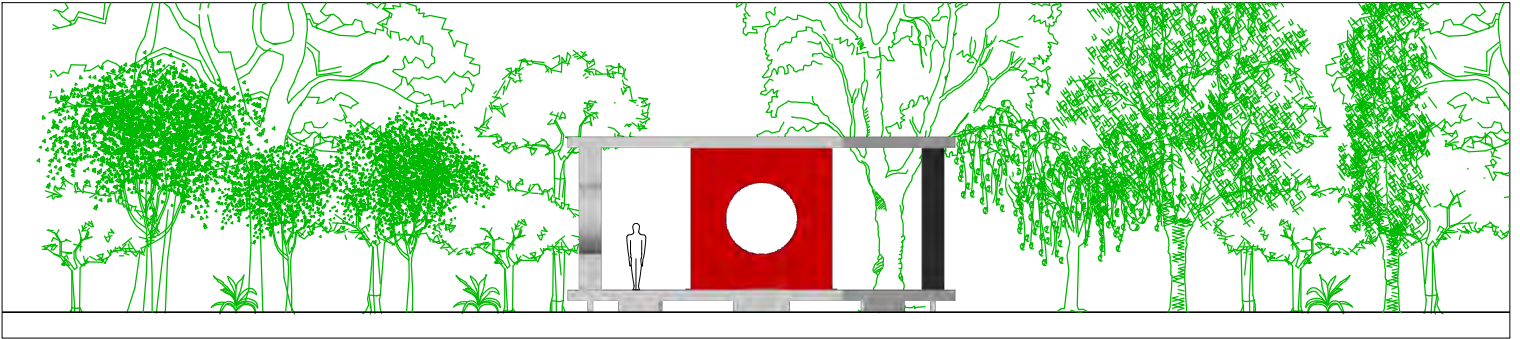
view 4



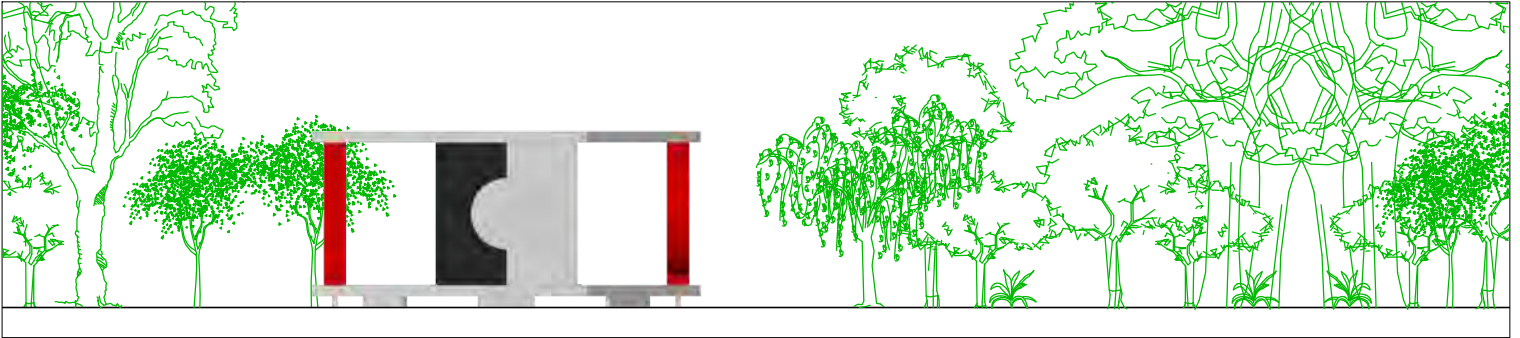
roof top



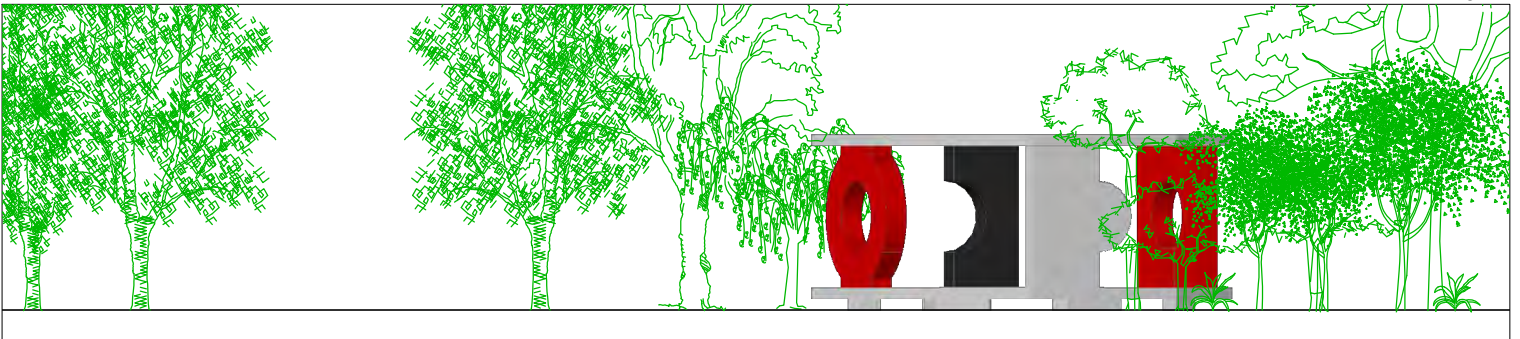
entrance view



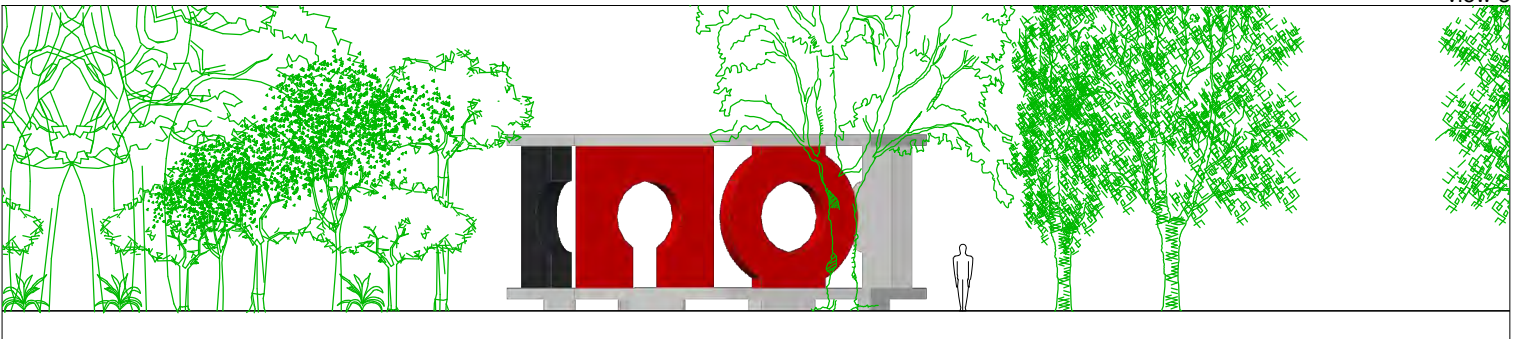
view 1



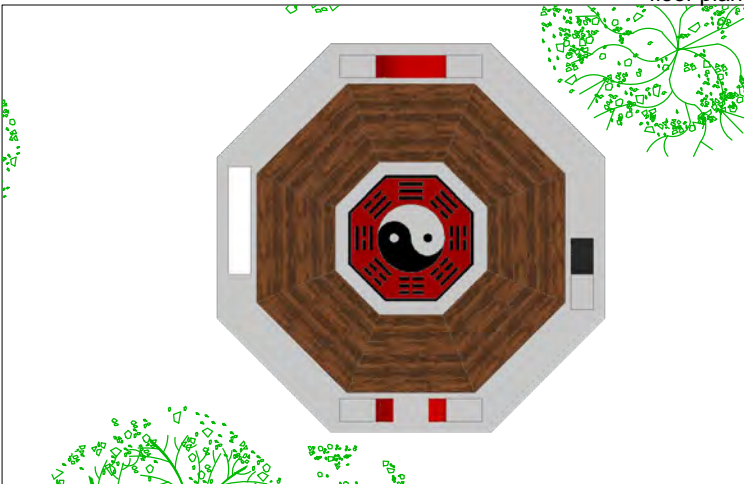
view 2



view 3



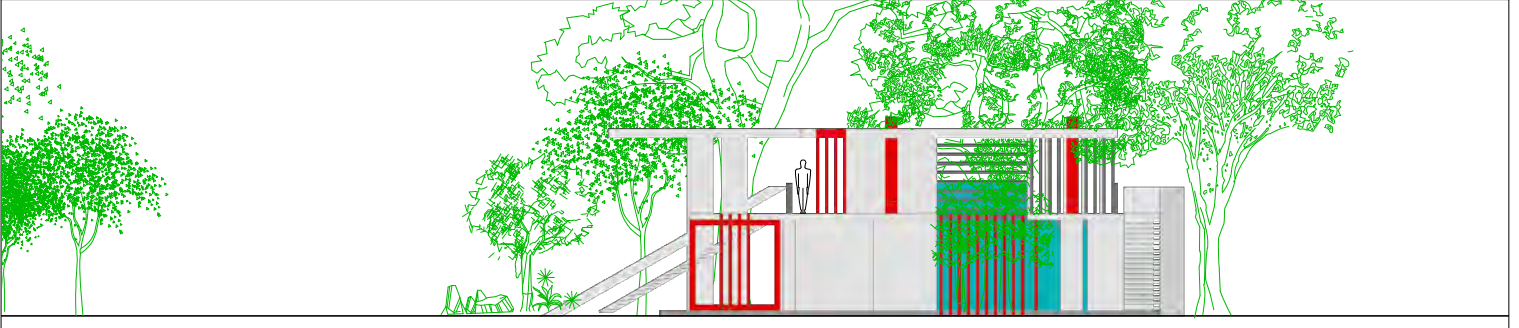
floor plan



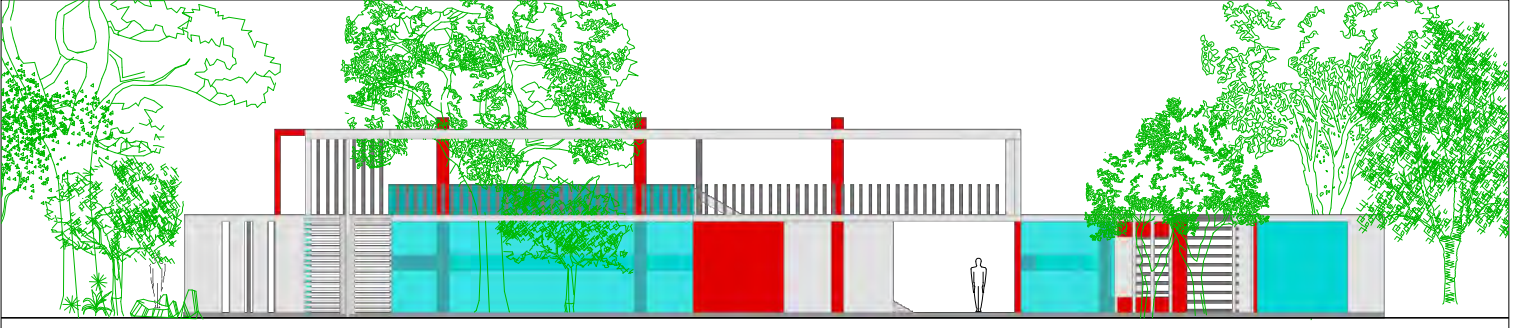
roof top



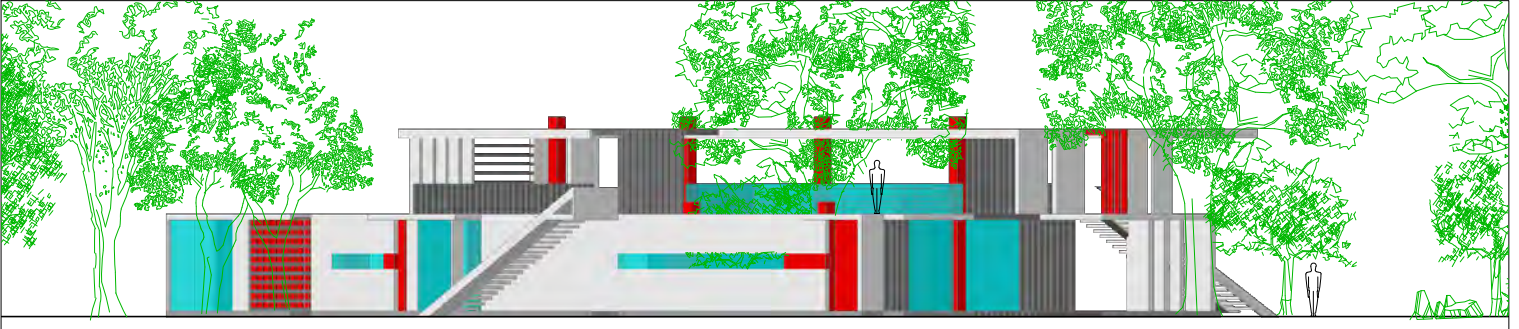
view 1



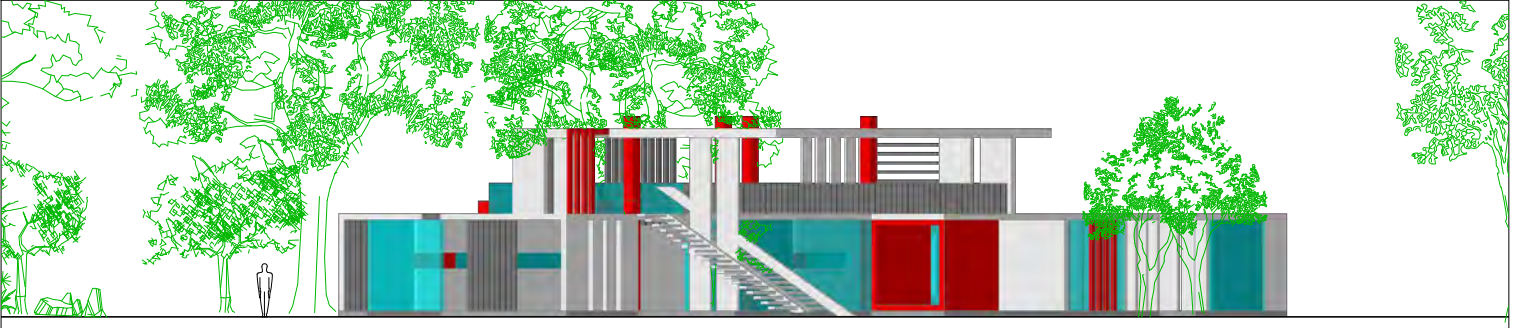
view 2



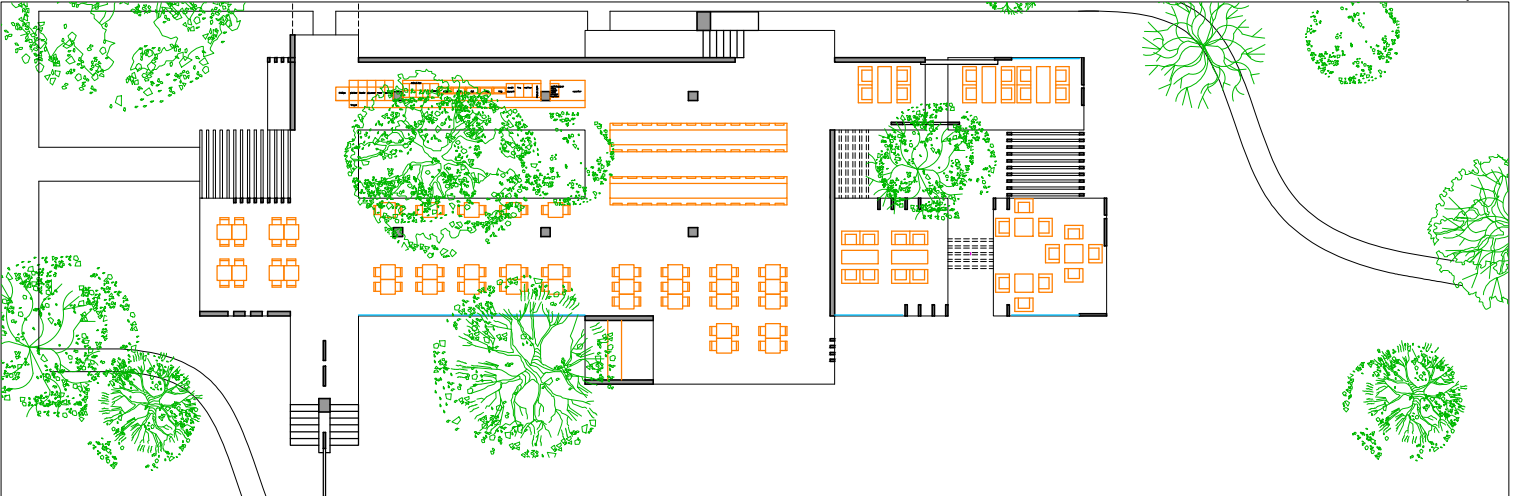
view 3



view 4



floor plan



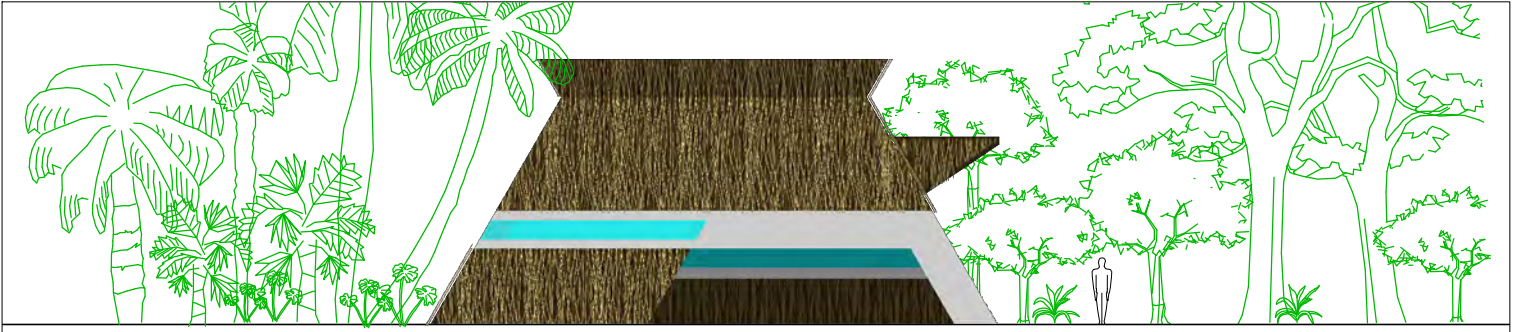
view 1



view 2



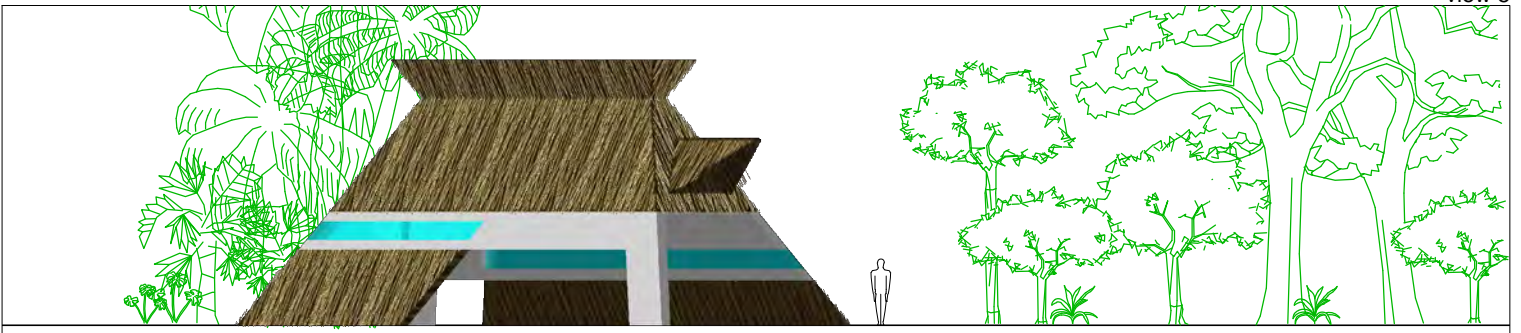
view 3



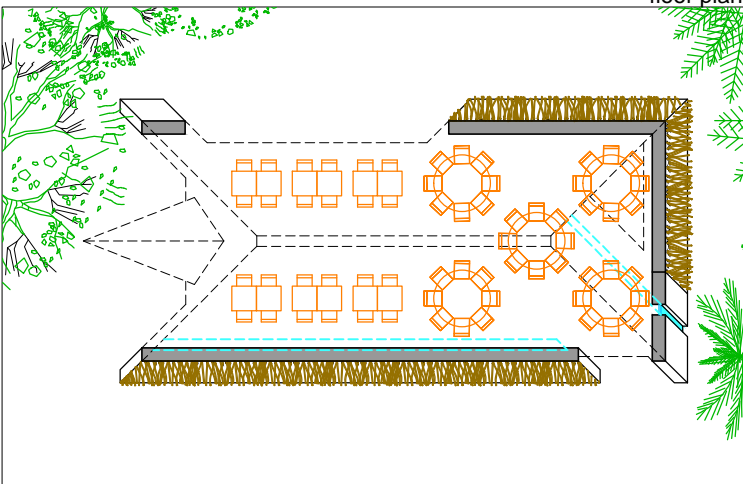
view 4



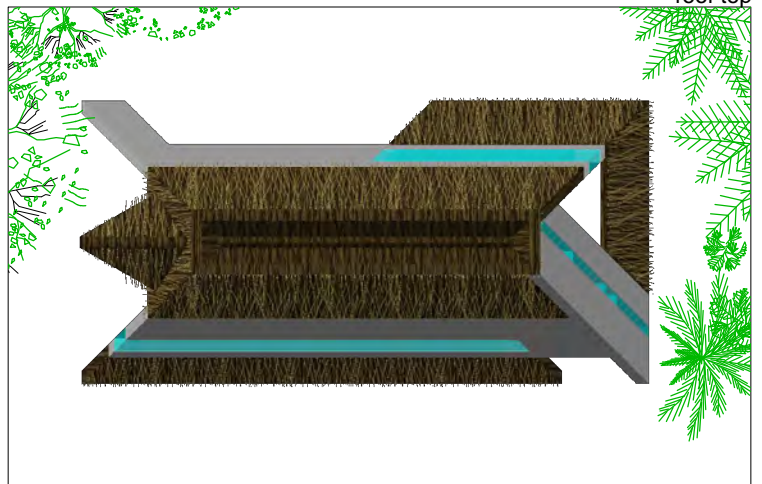
view 5



floor plan



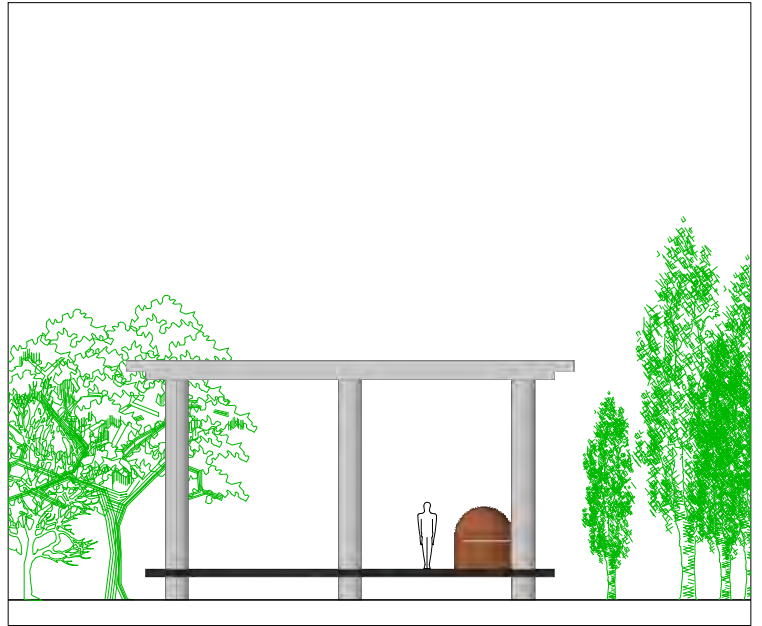
roof top



view 1



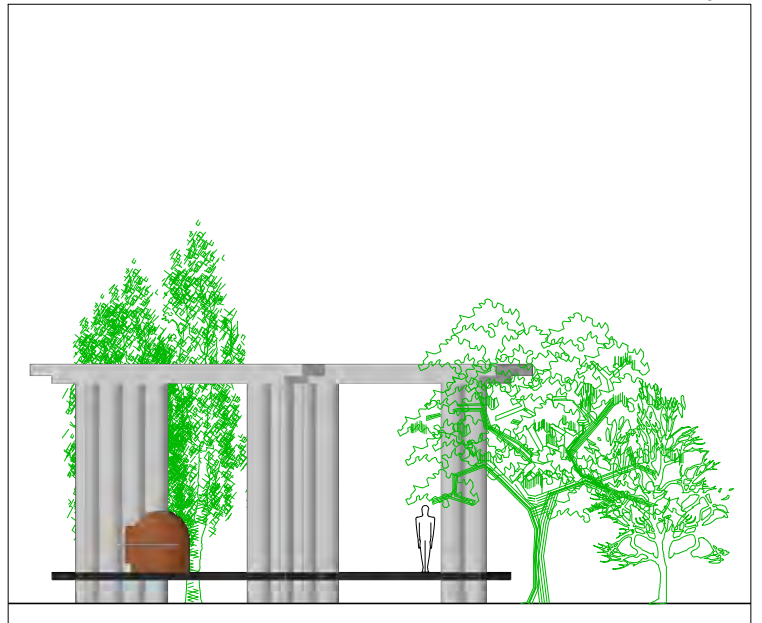
view 2



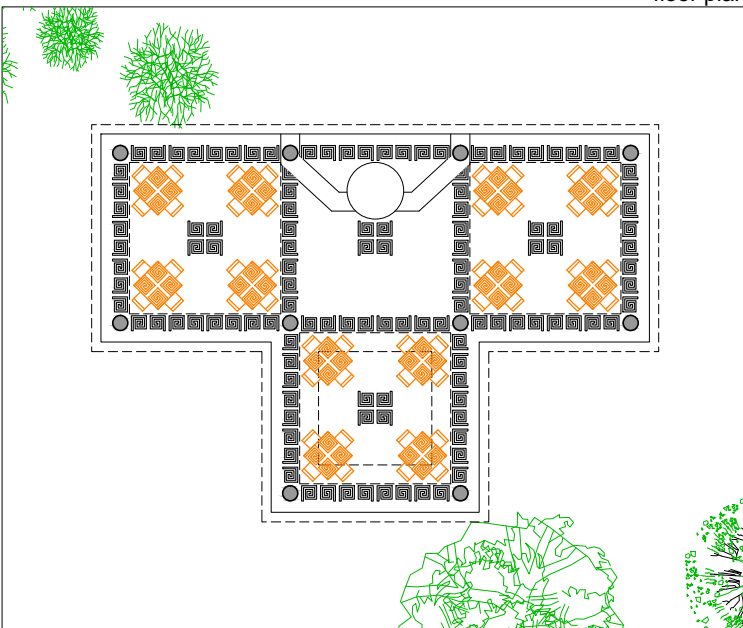
view 3



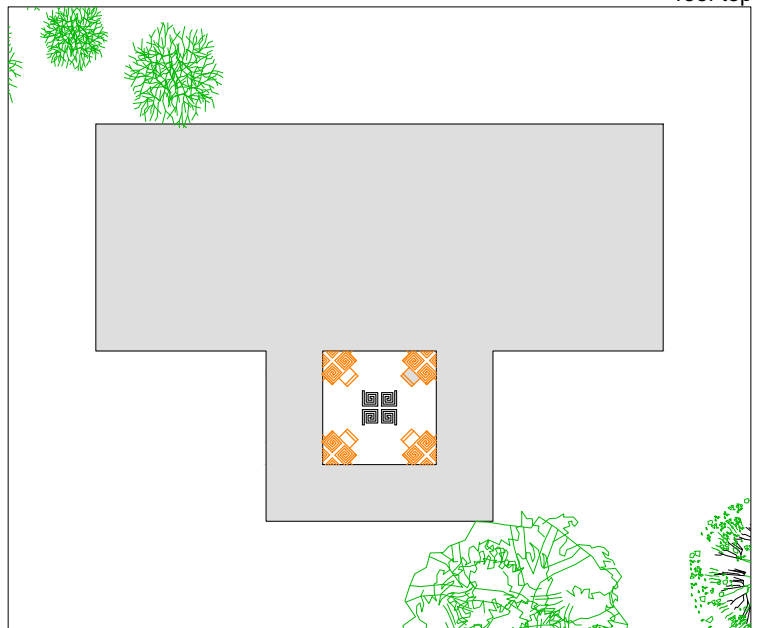
view 4



floor plan

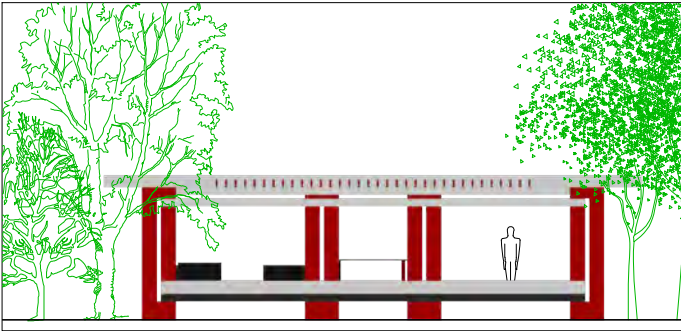


roof top

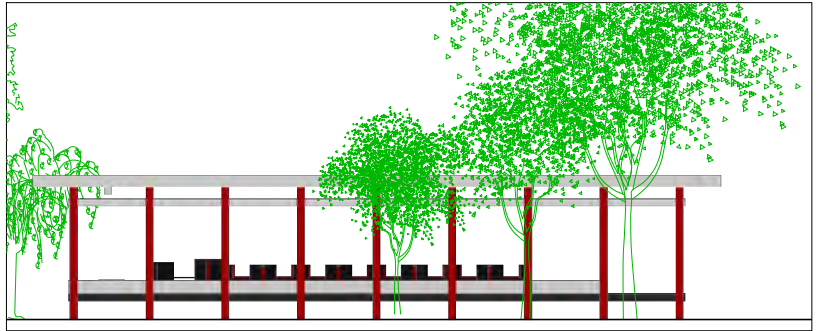




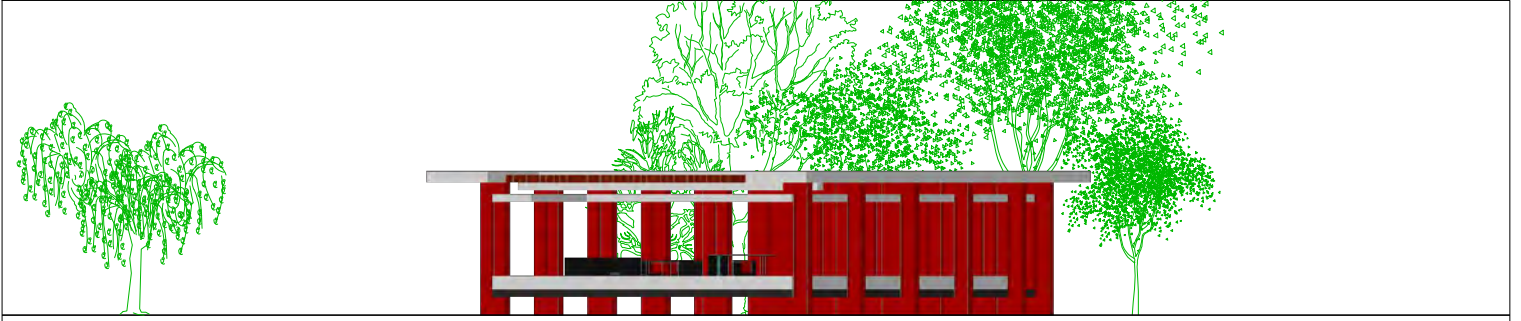
front view



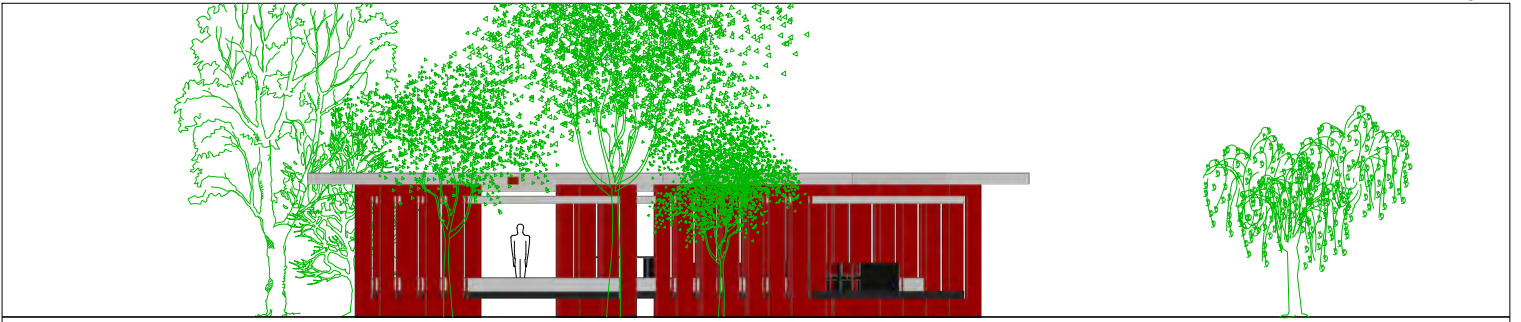
side view



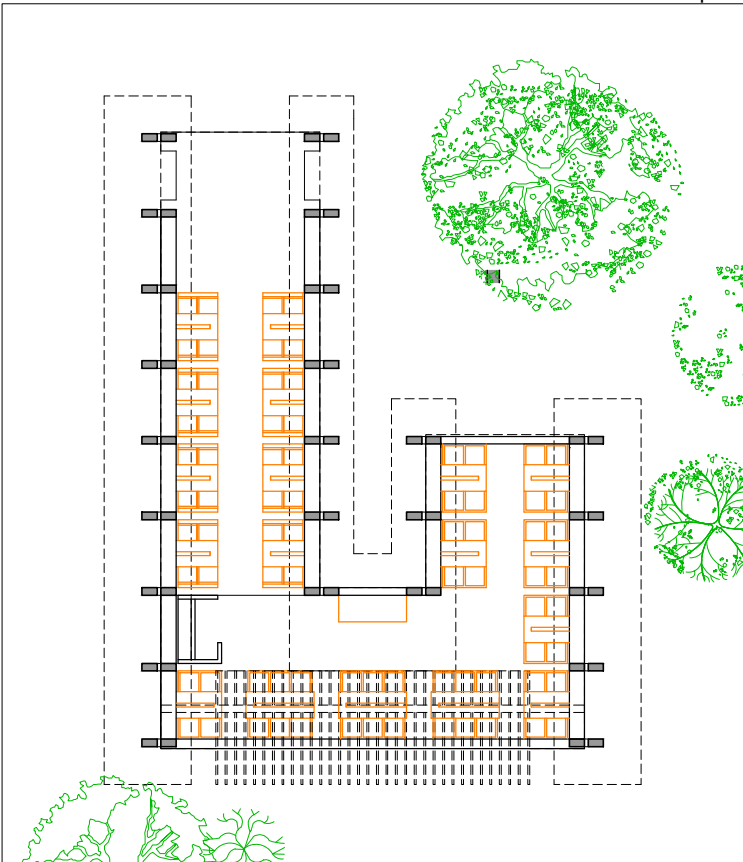
view 1



view 2



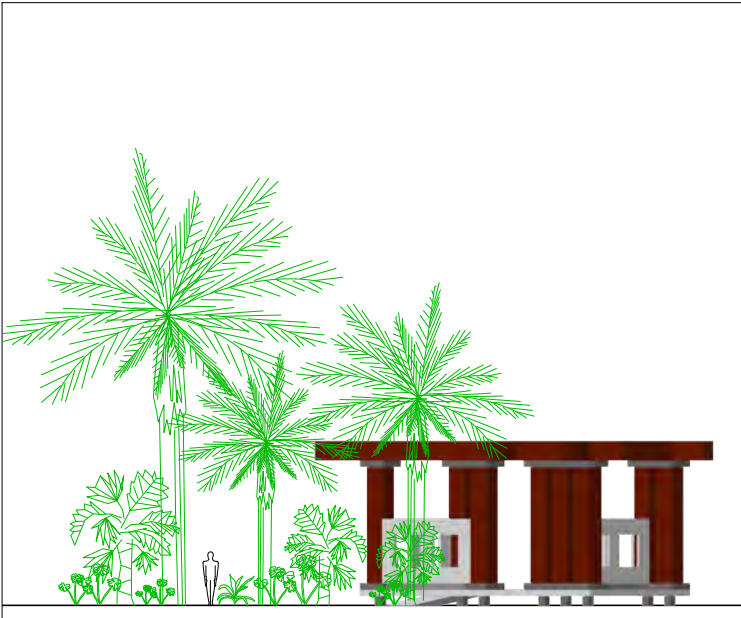
floor plan



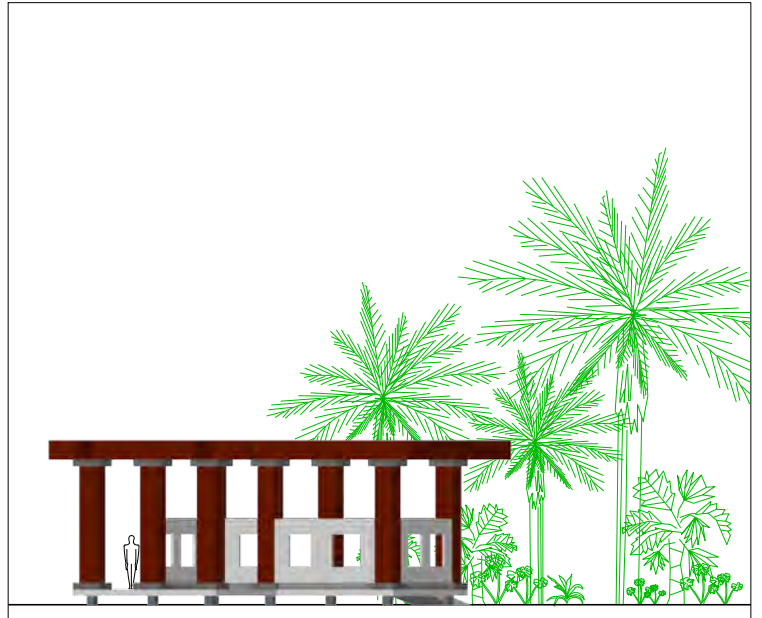
roof top



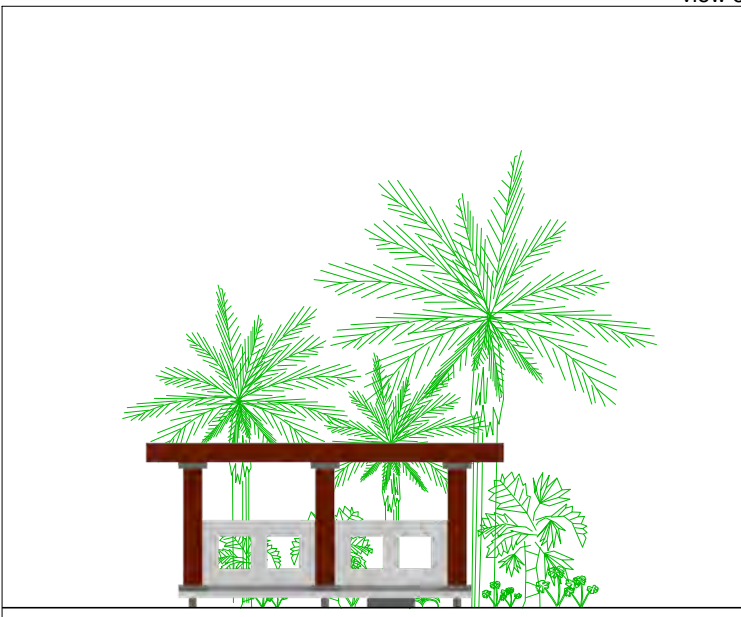
view 1



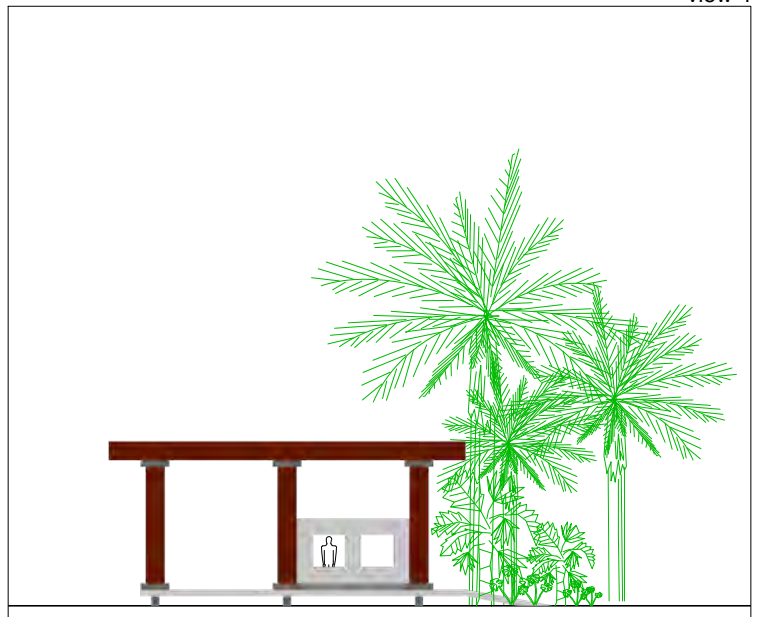
view 2



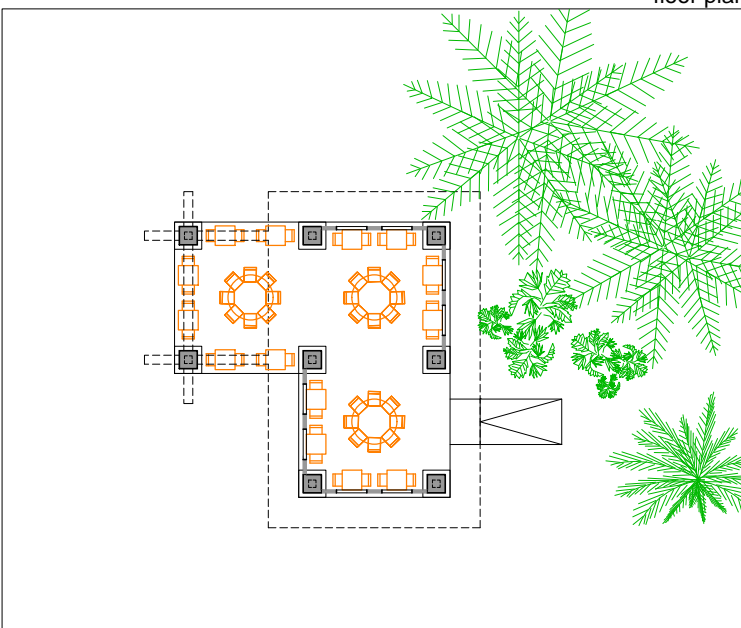
view 3



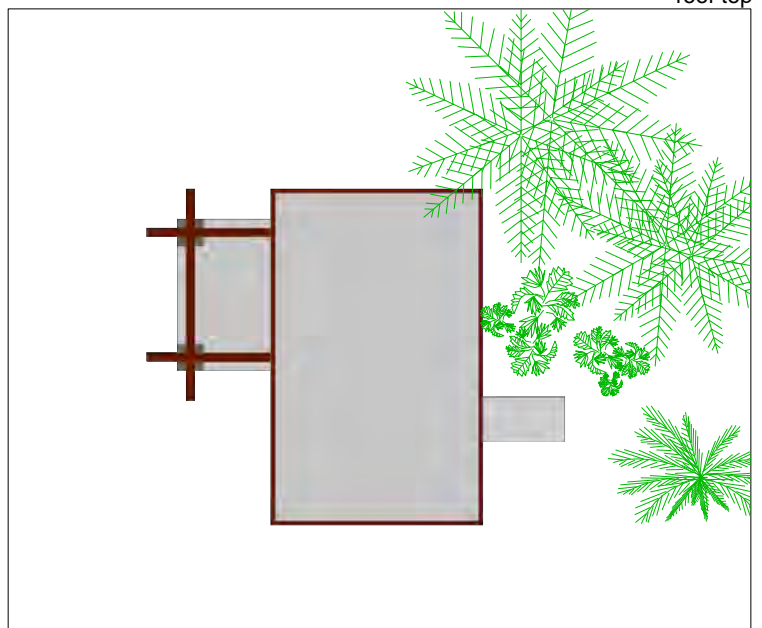
view 4



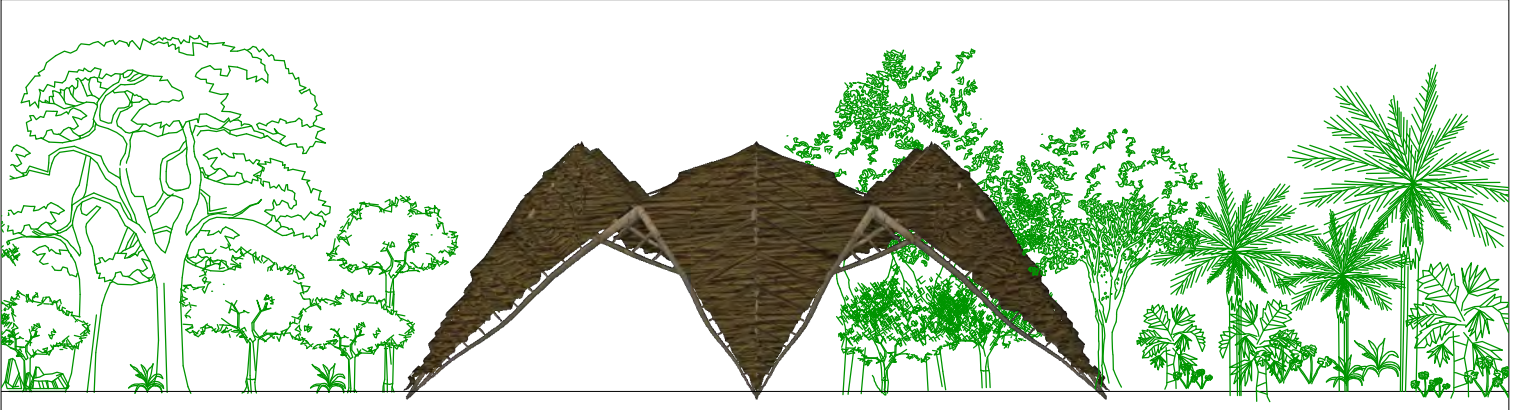
floor plan



roof top



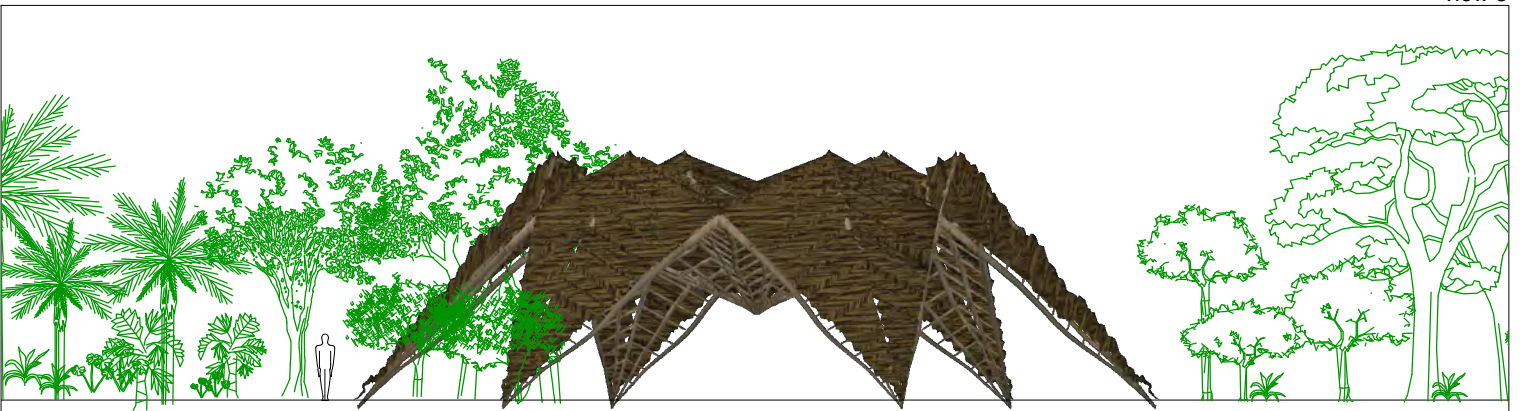
view 1



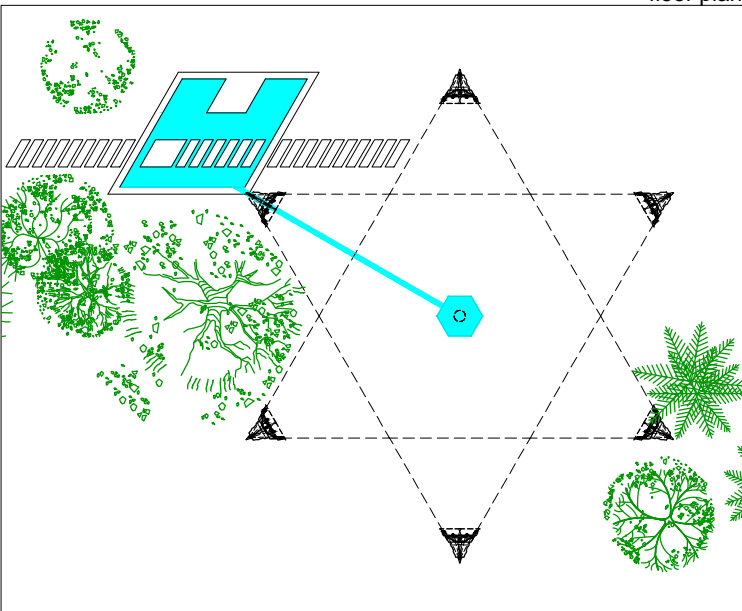
view 2



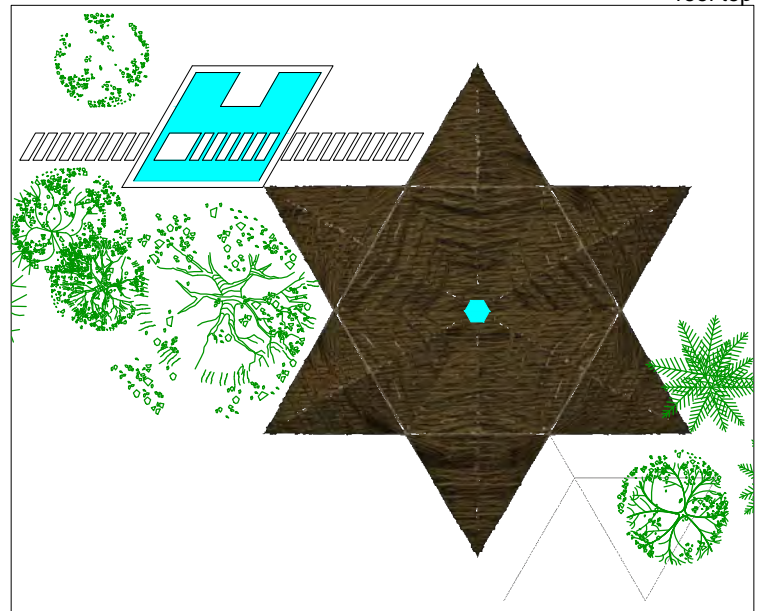
view 3



floor plan



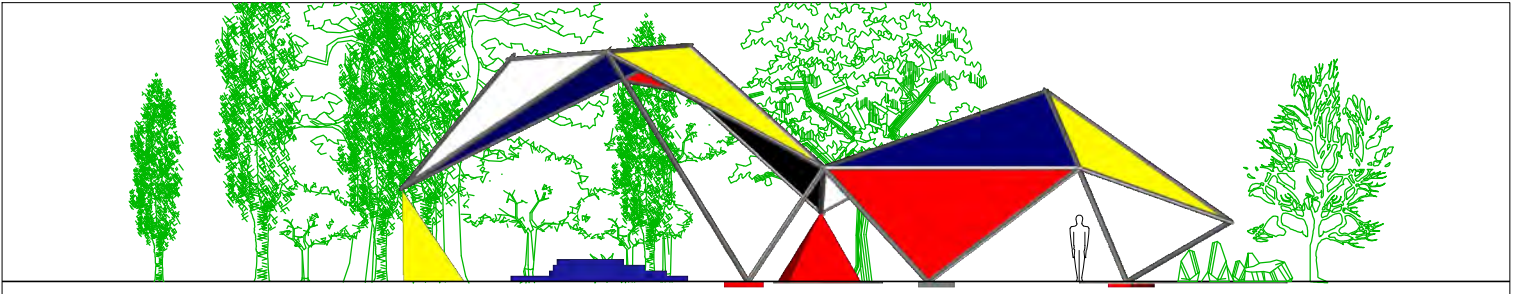
roof top



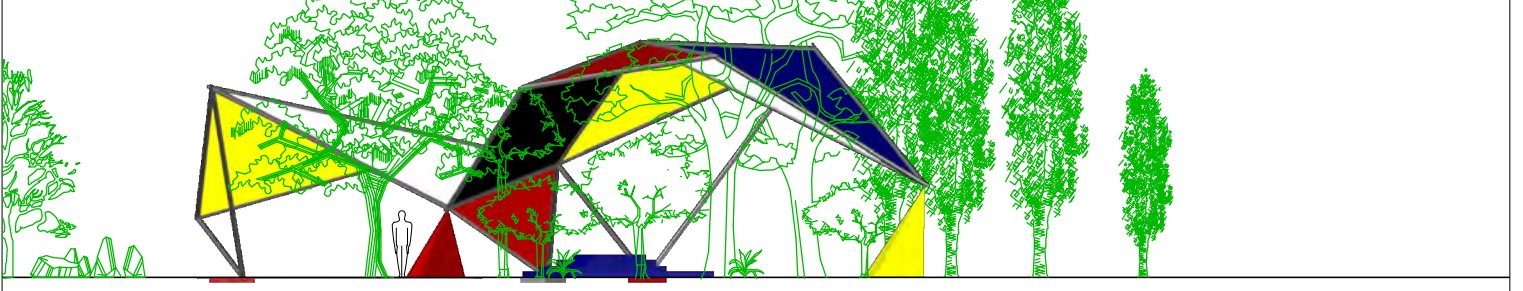
star palapa



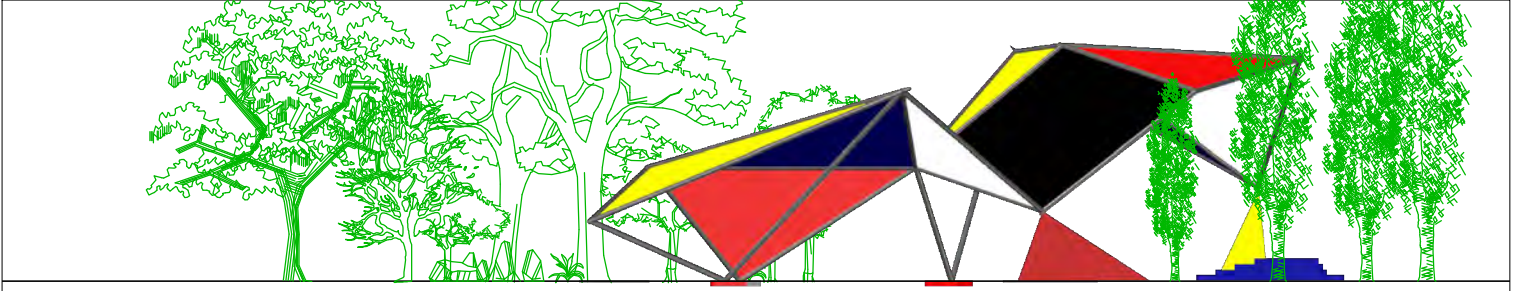
view 1



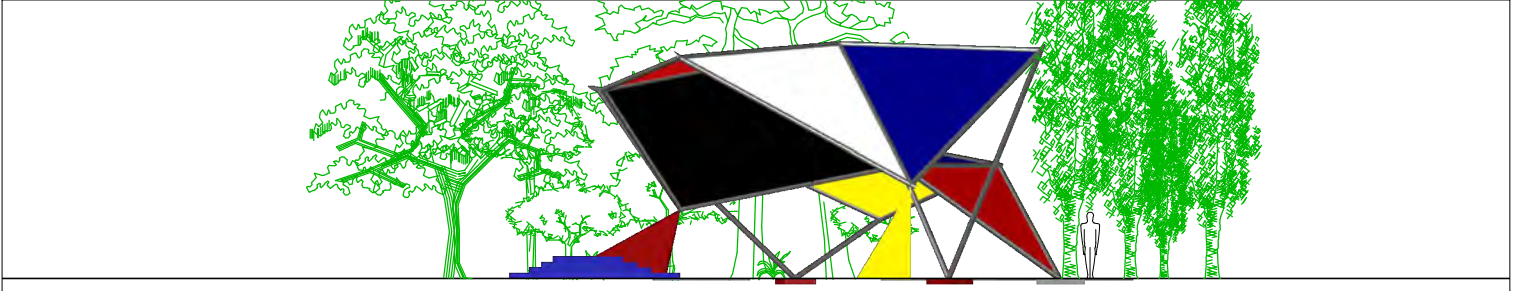
view 2



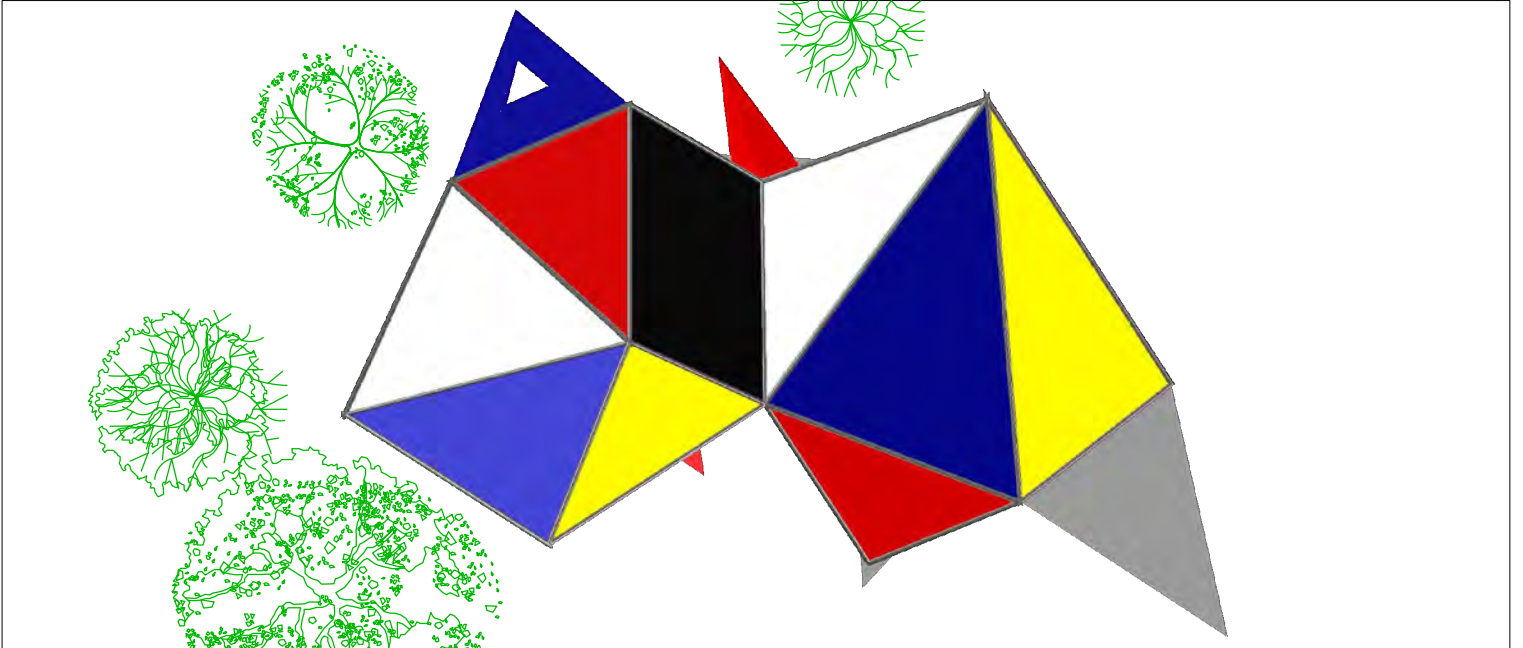
view 3



view 4



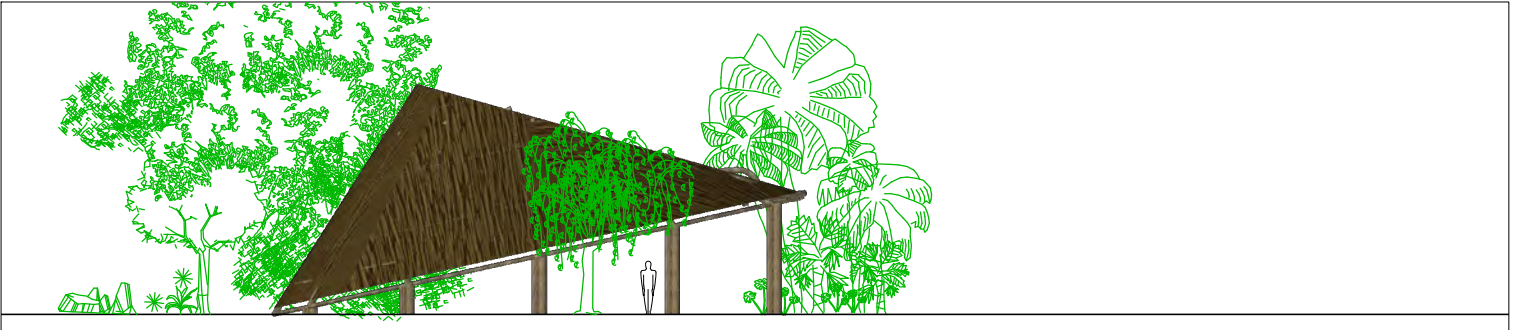
roof top



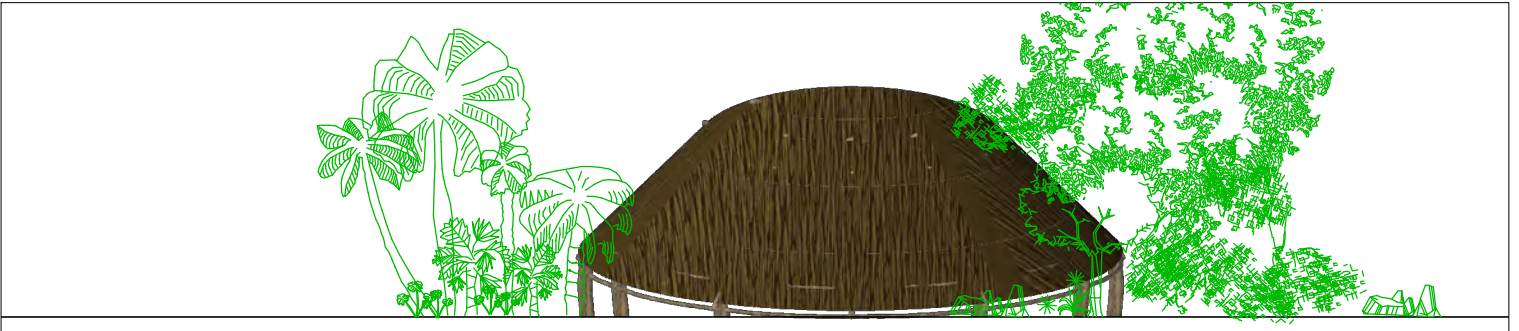
view 1



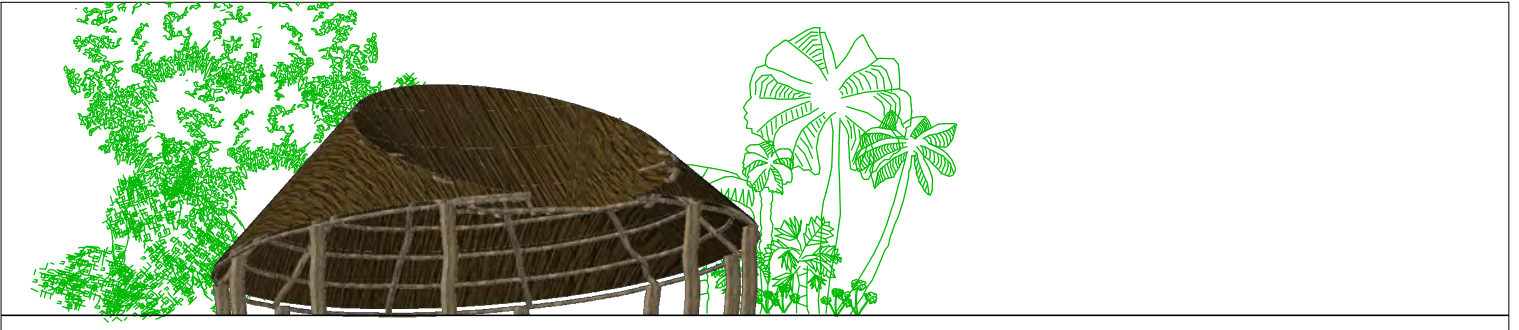
view 2



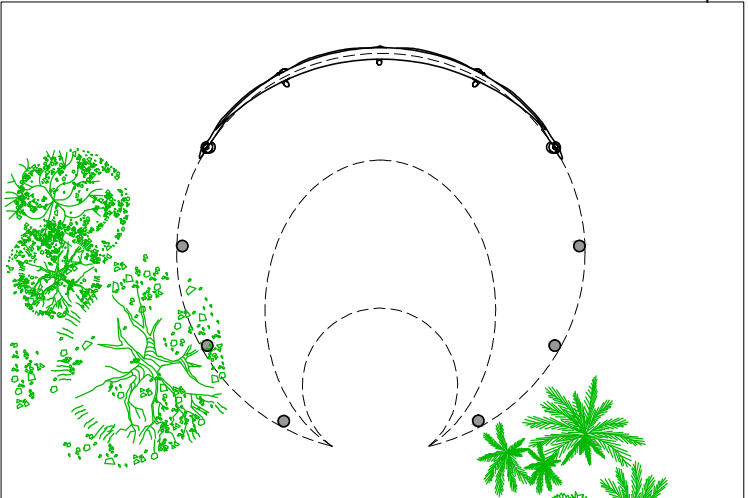
view 3



view 4



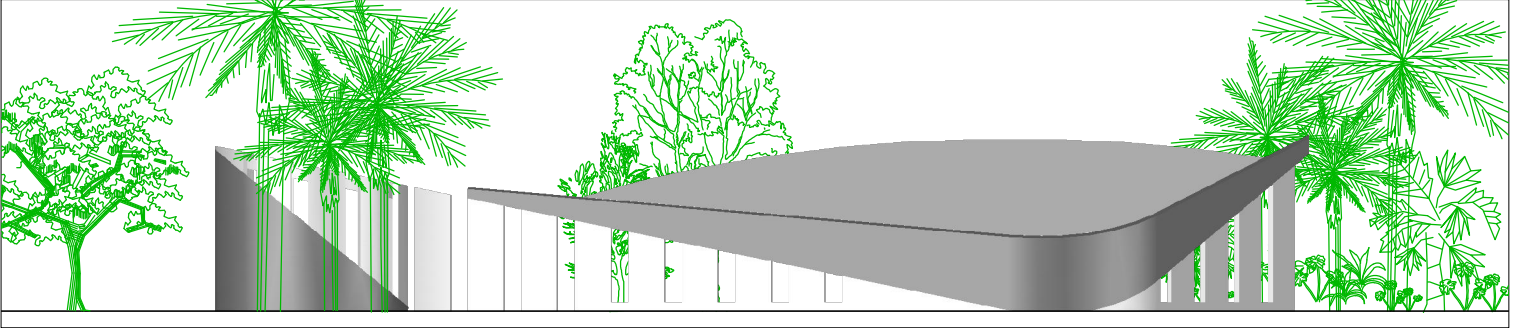
floor plan



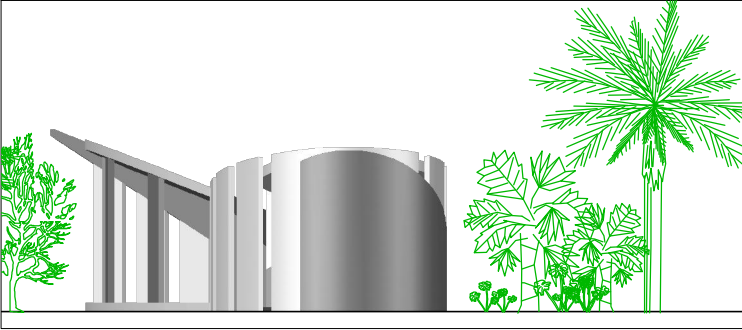
roof top



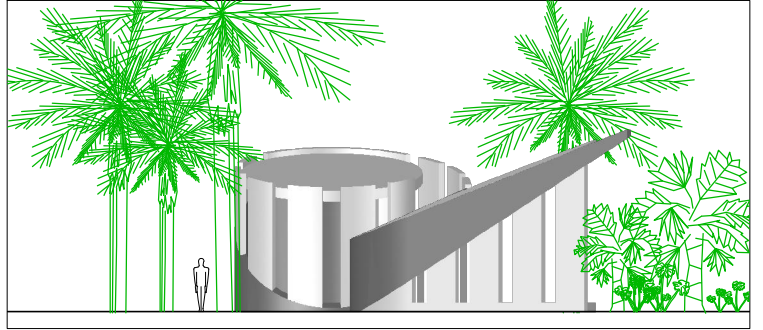
view 1



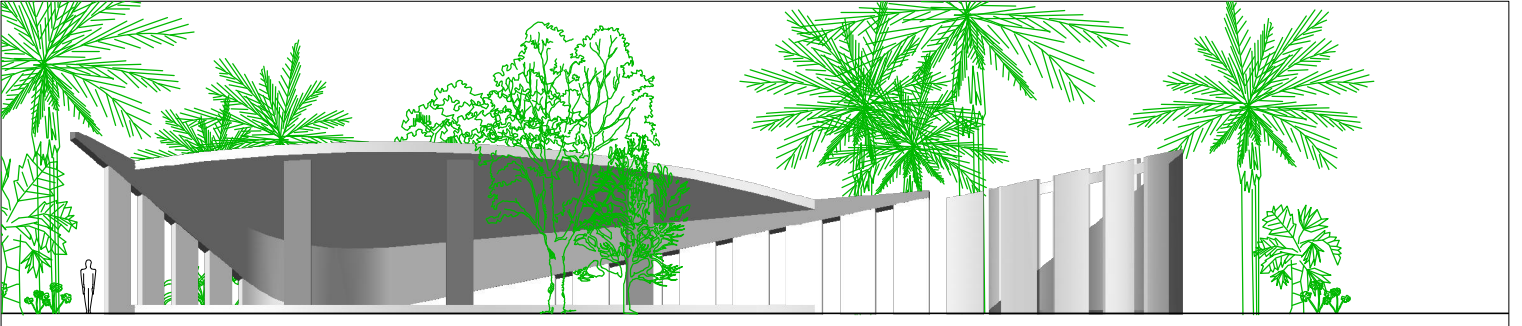
view 2



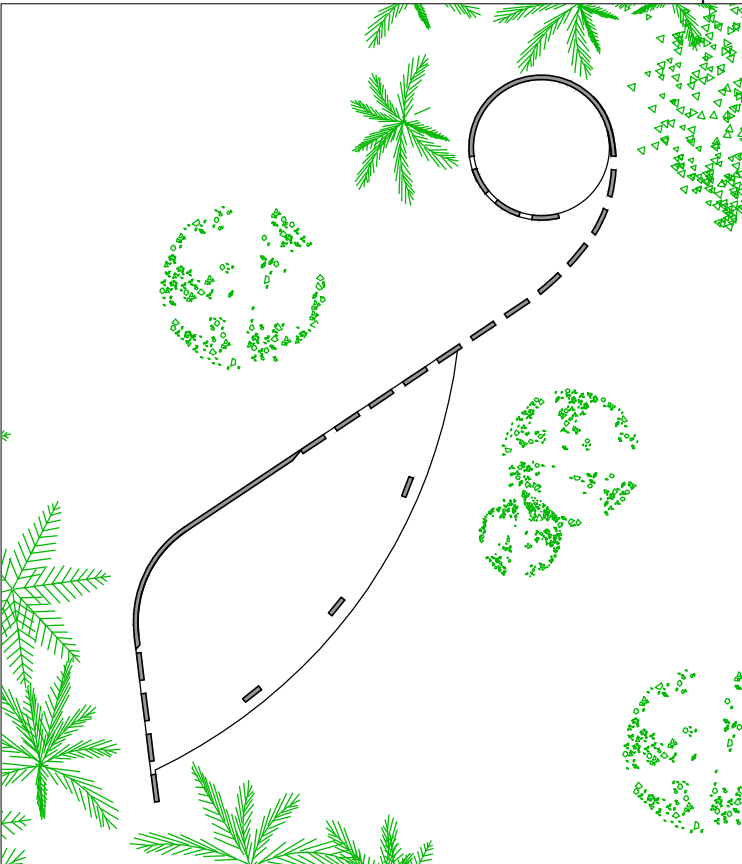
view 3



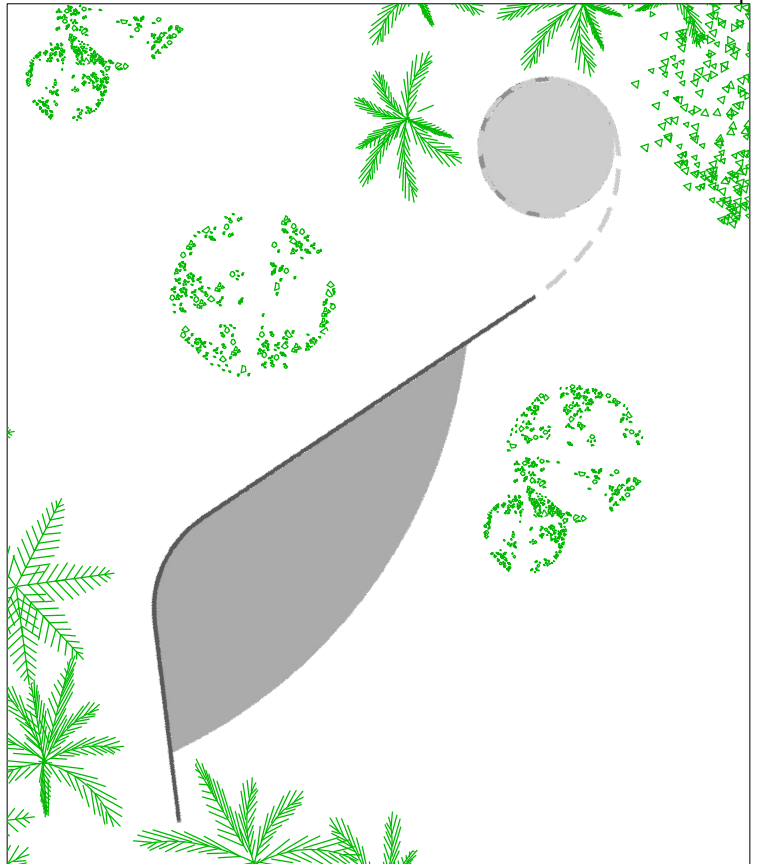
view 4

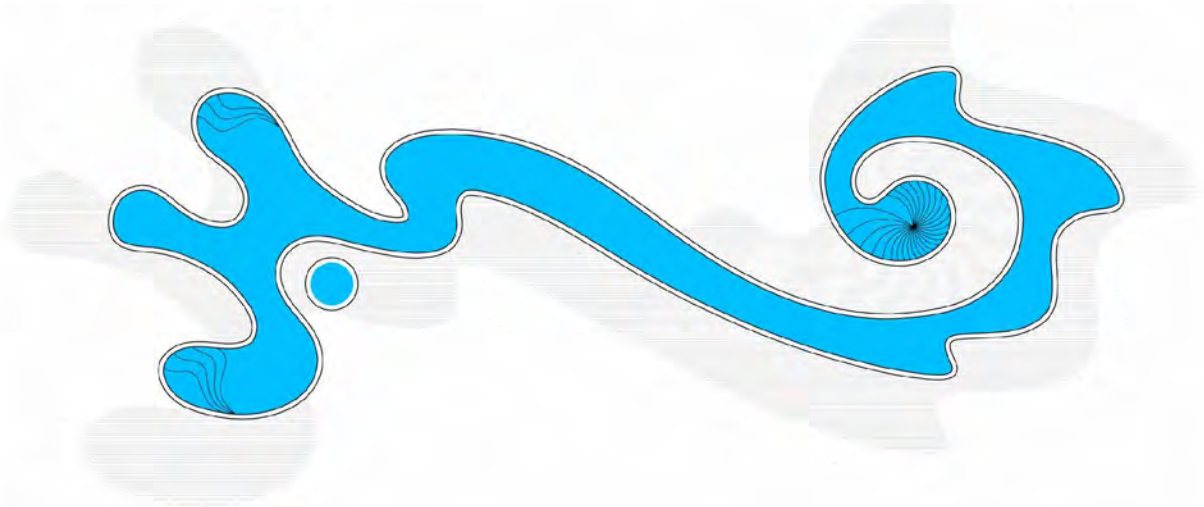
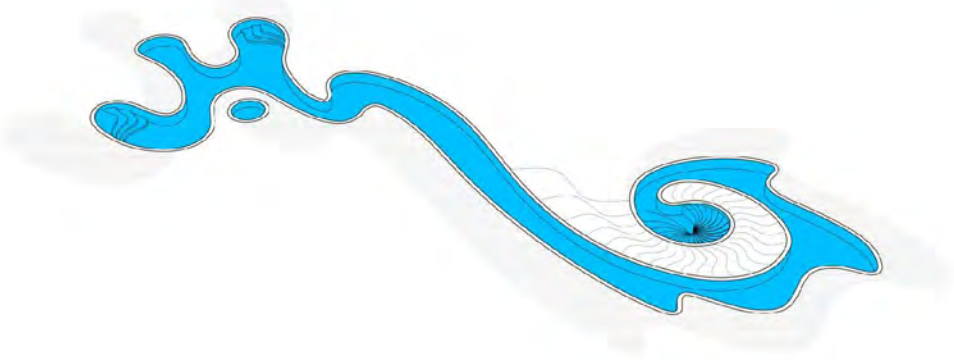
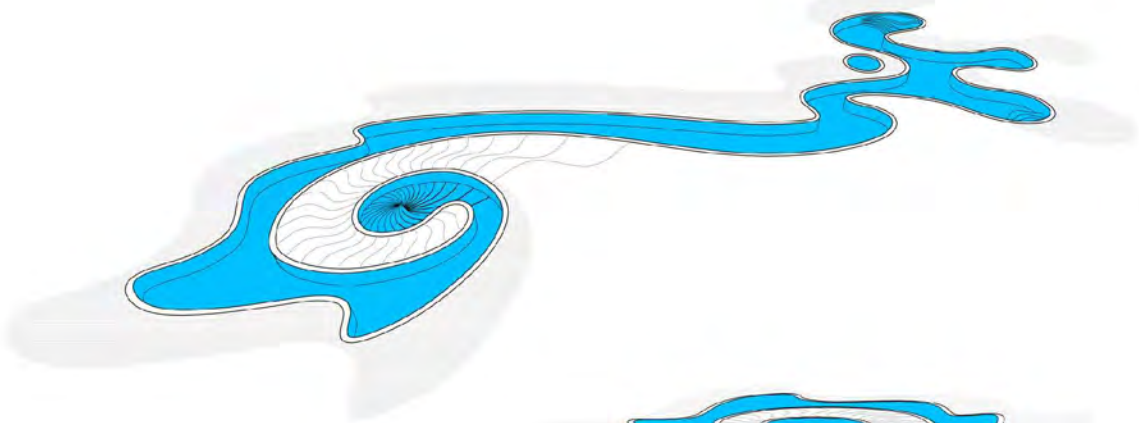


floor plan



roof top





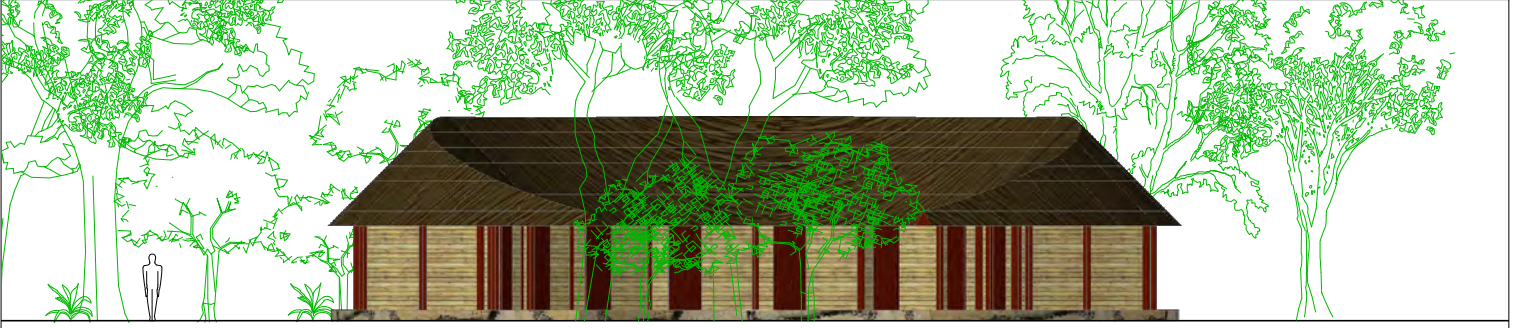
pool plan



ZORBA ZING  
the pool



view 1



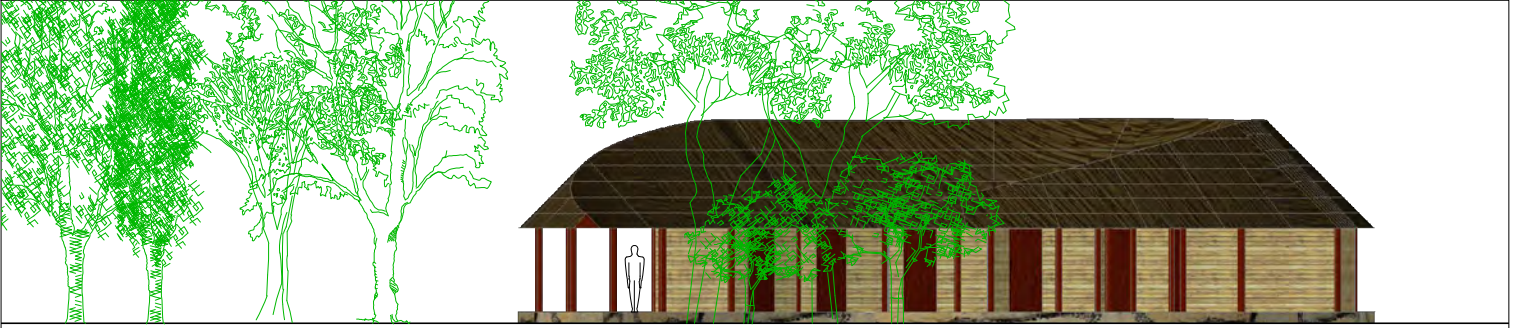
view 2



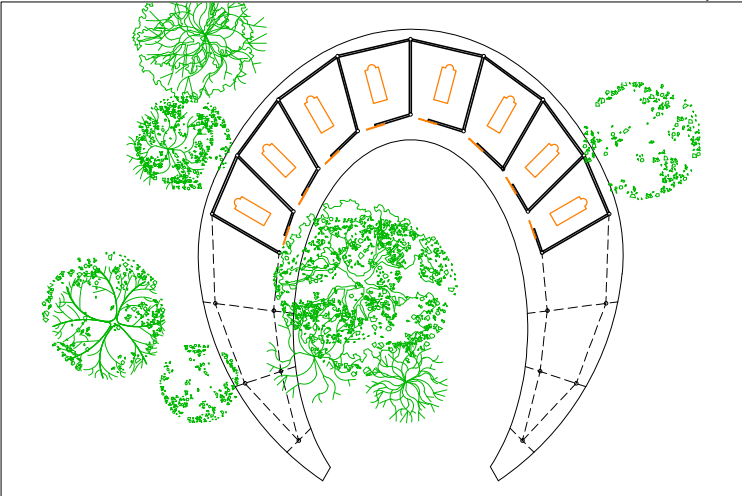
view 3



view 4



floor plan



roof top



crescent moon palapa





view 1



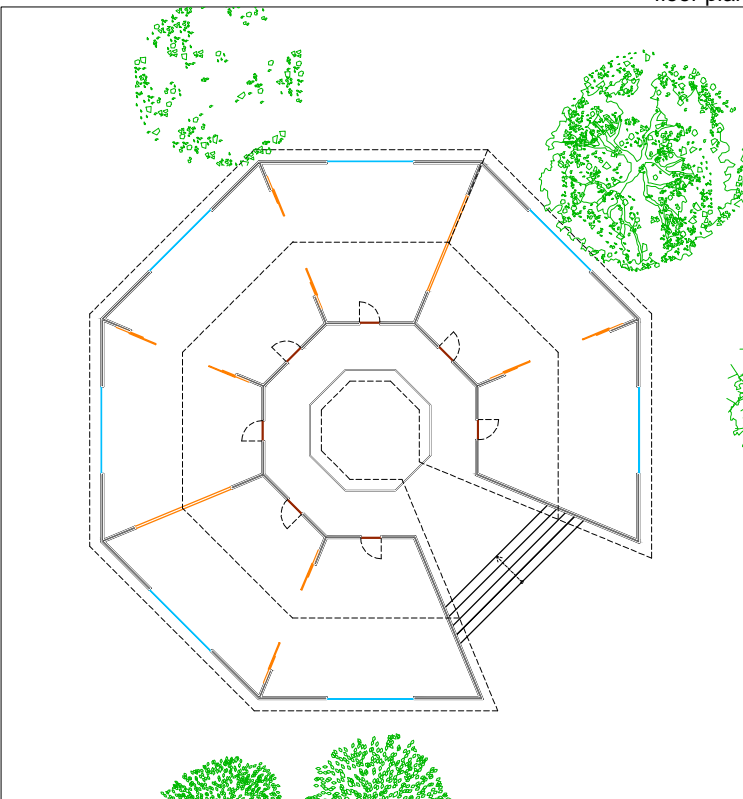
view 2



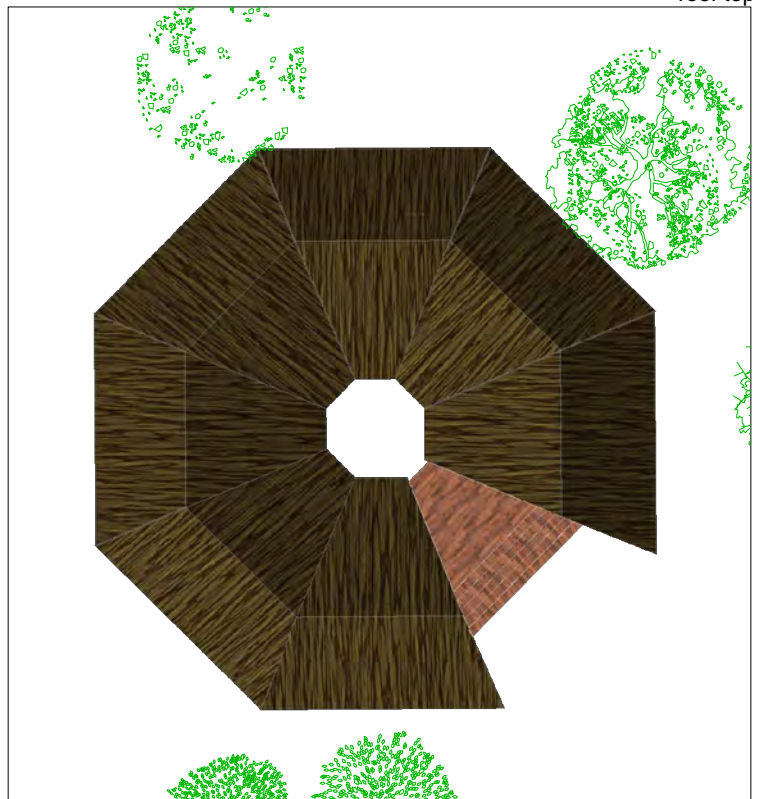
view 3



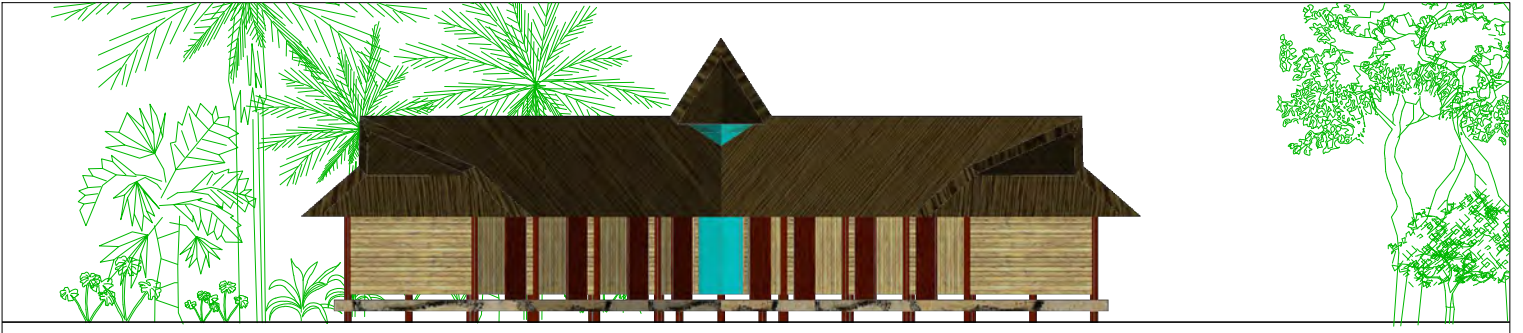
floor plan



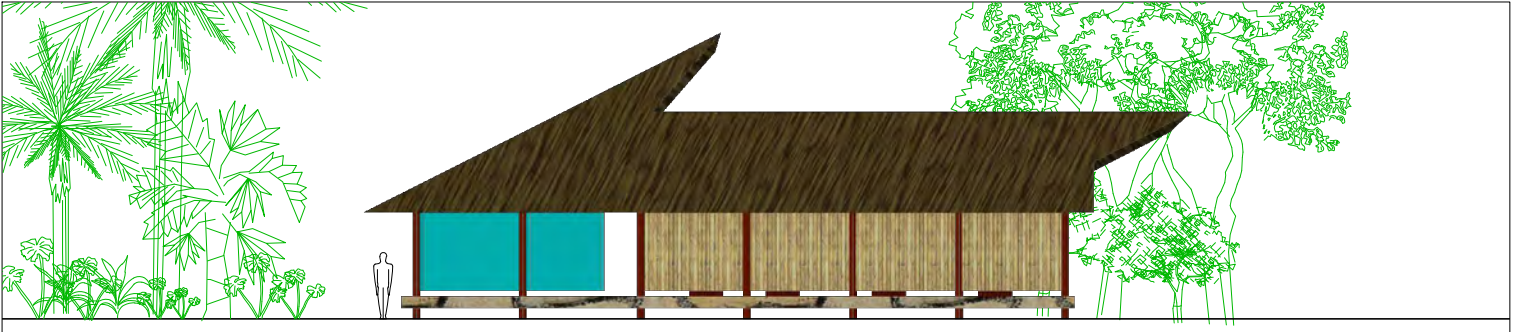
roof top



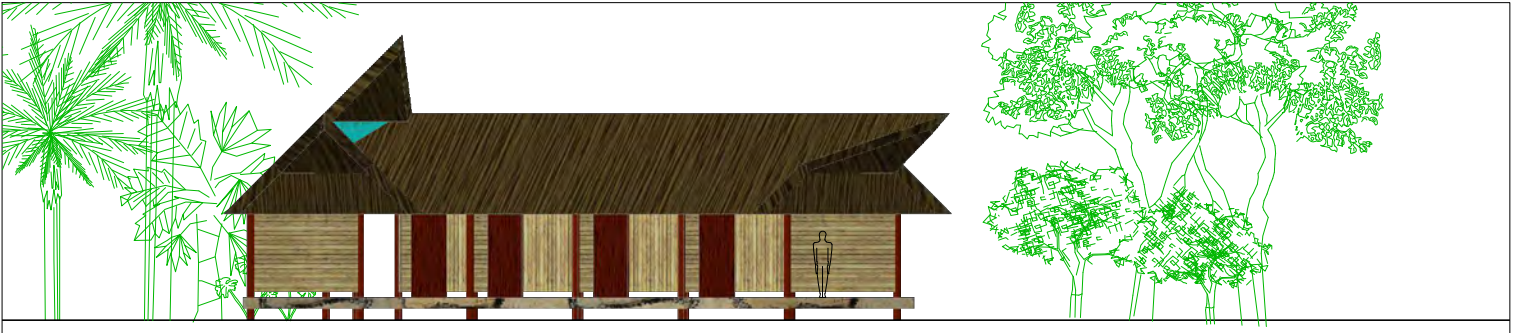
view 1



view 2



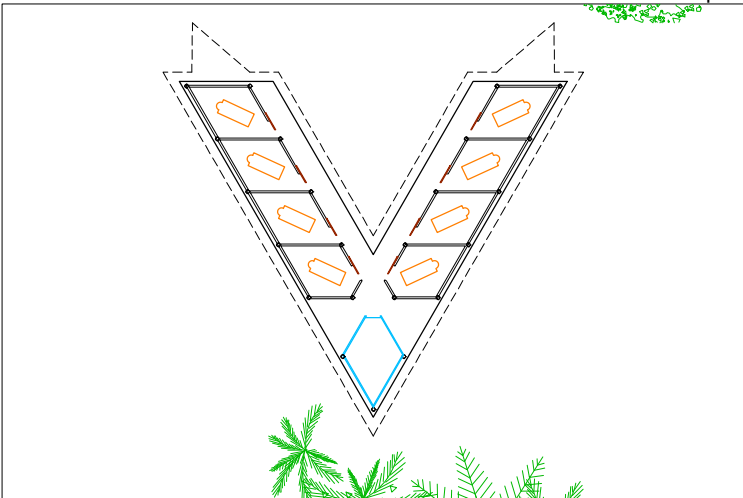
view 3



view 4



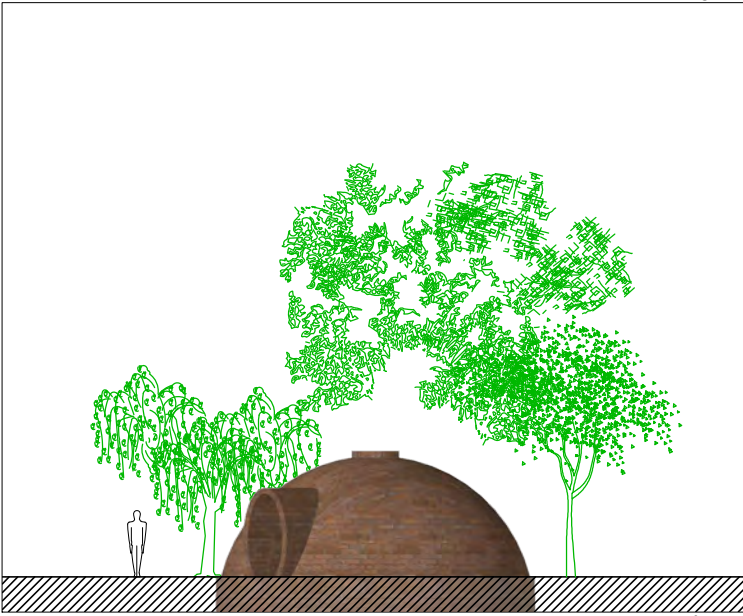
floor plan



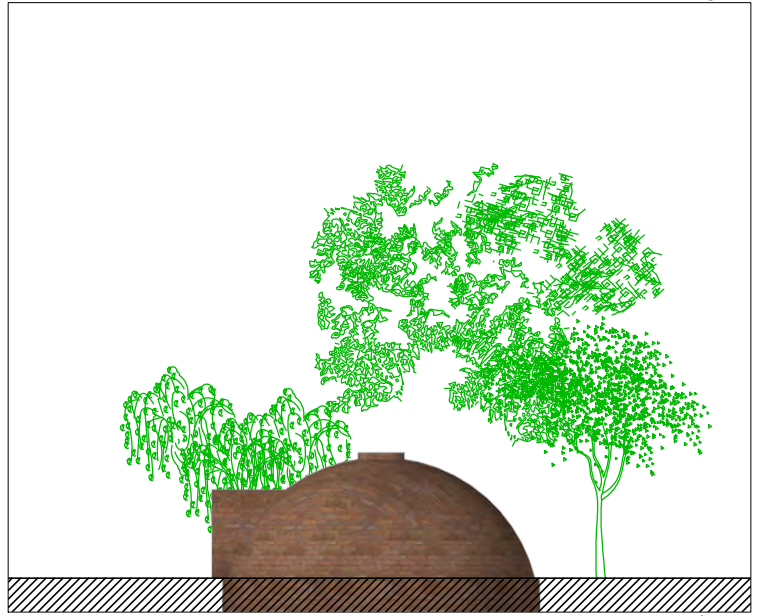
roof top



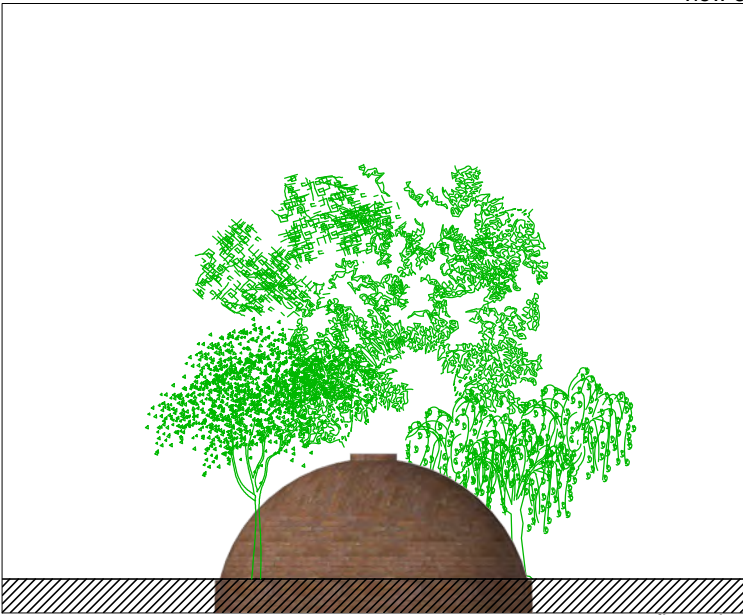
view 1



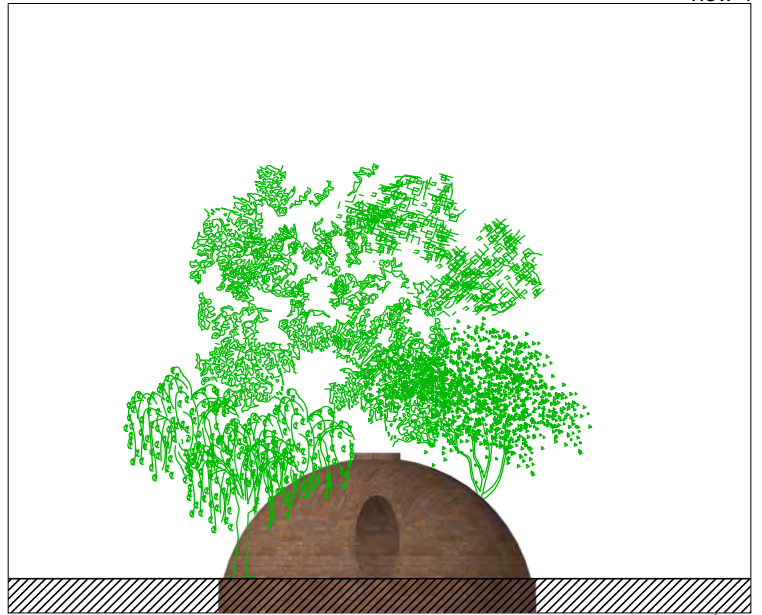
view 2



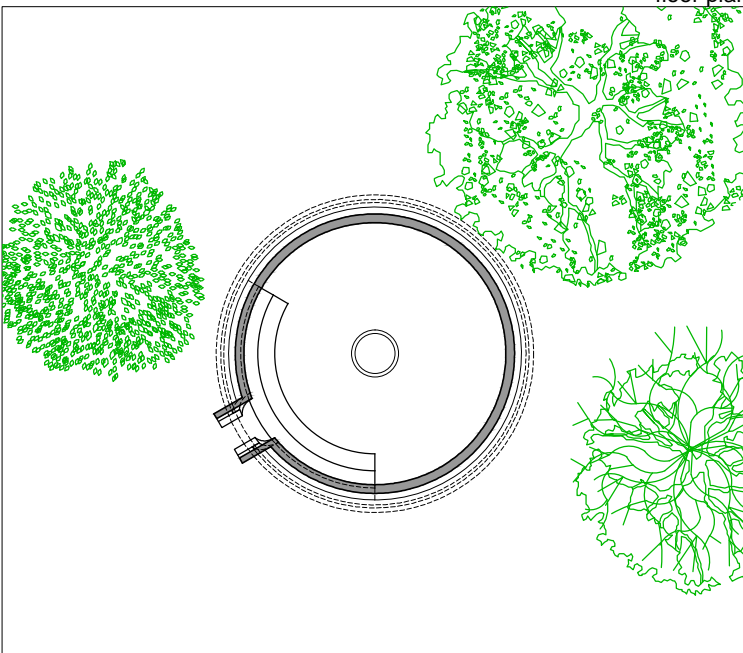
view 3



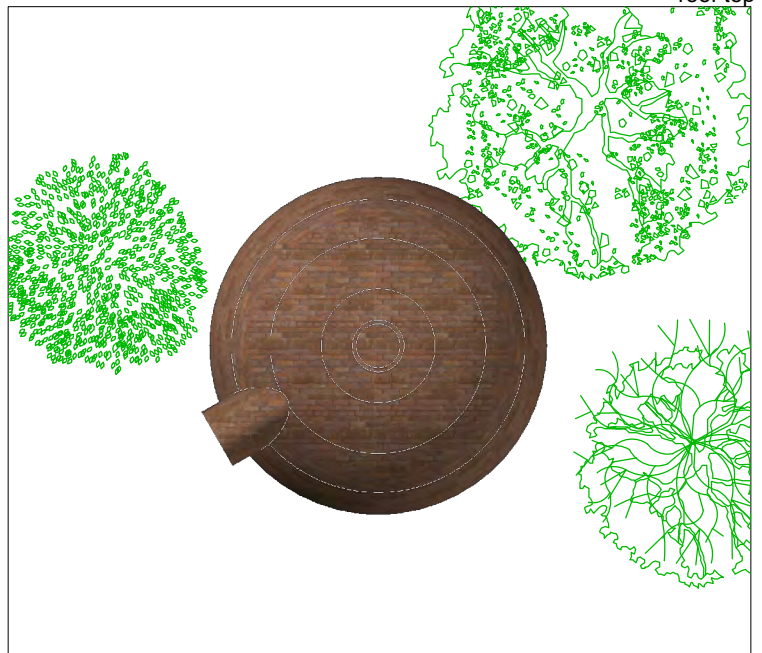
view 4

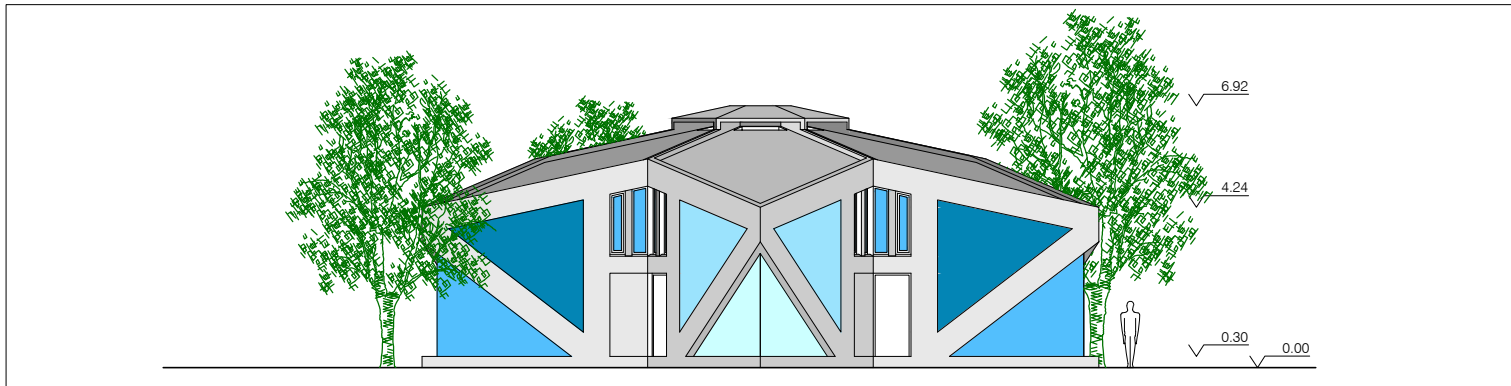


floor plan

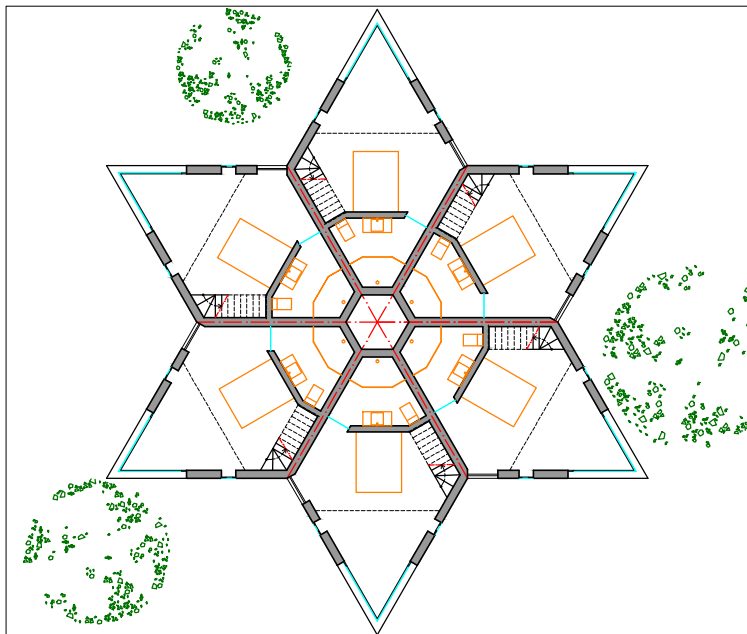
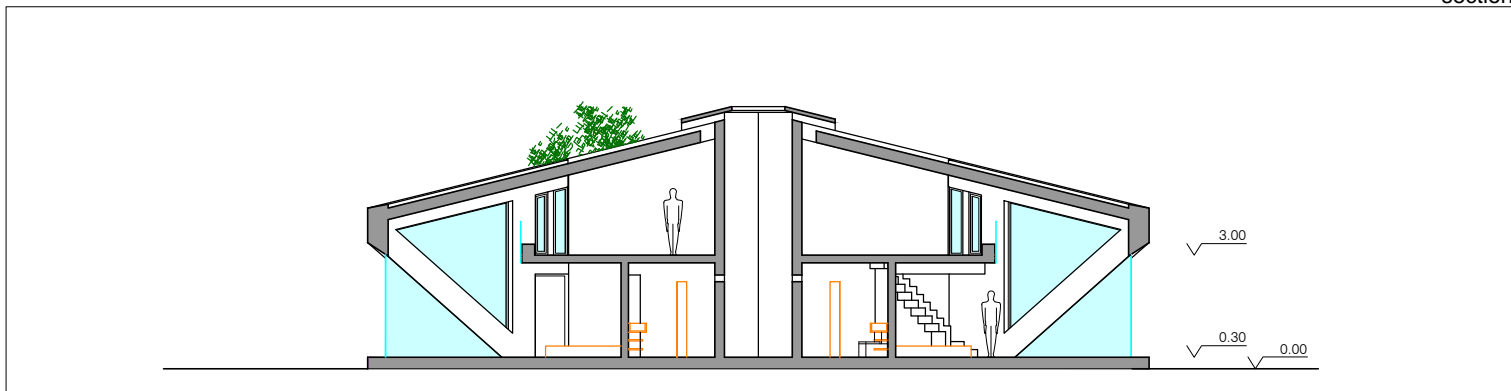


roof top

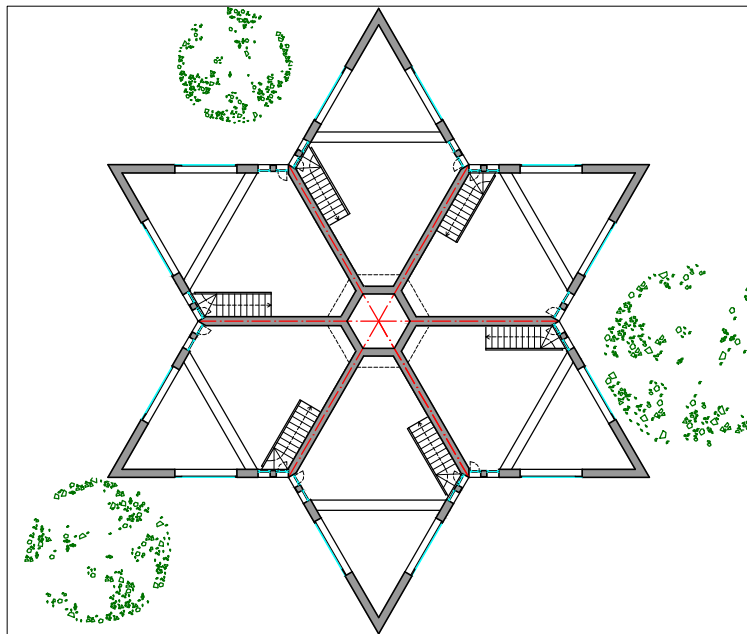




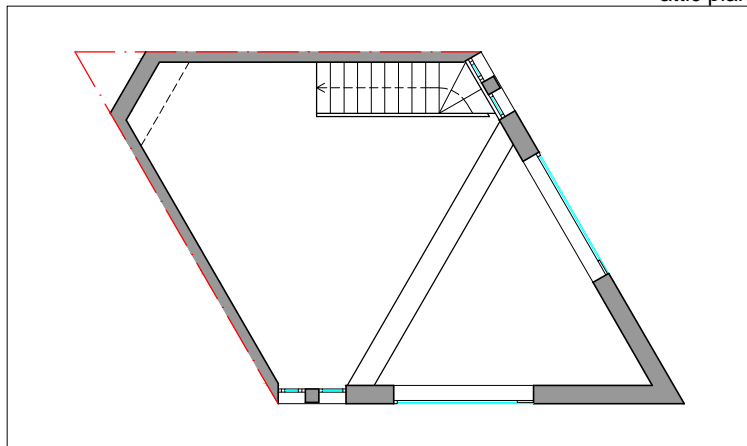
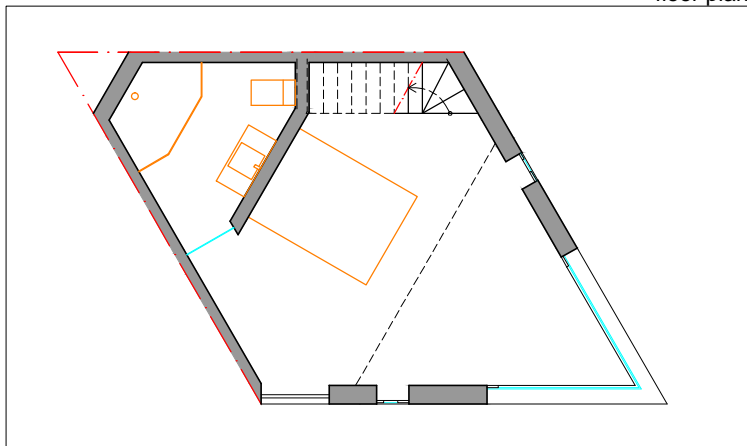
section



floor plan



attic plan



TOTAL BUILT UP AREA - 50.00 m<sup>2</sup>

bedroom area - 20.00 m<sup>2</sup>  
bathroom area - 5.00 m<sup>2</sup>

attic area - 17.00 m<sup>2</sup>

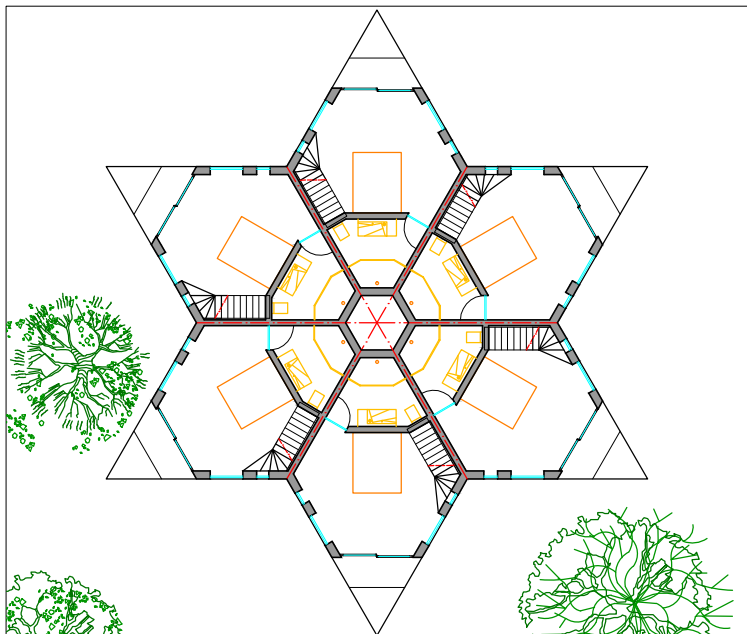
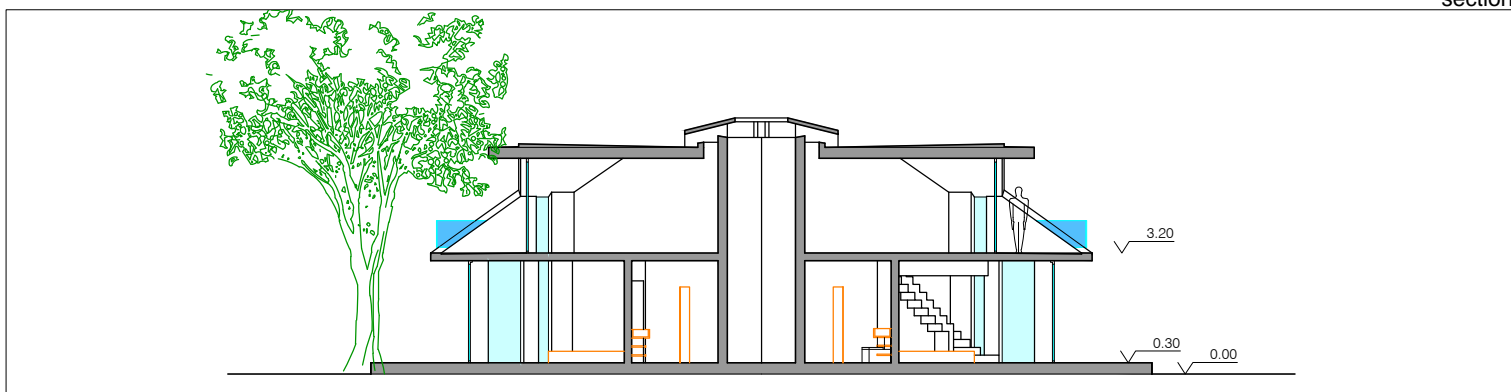
star cottage



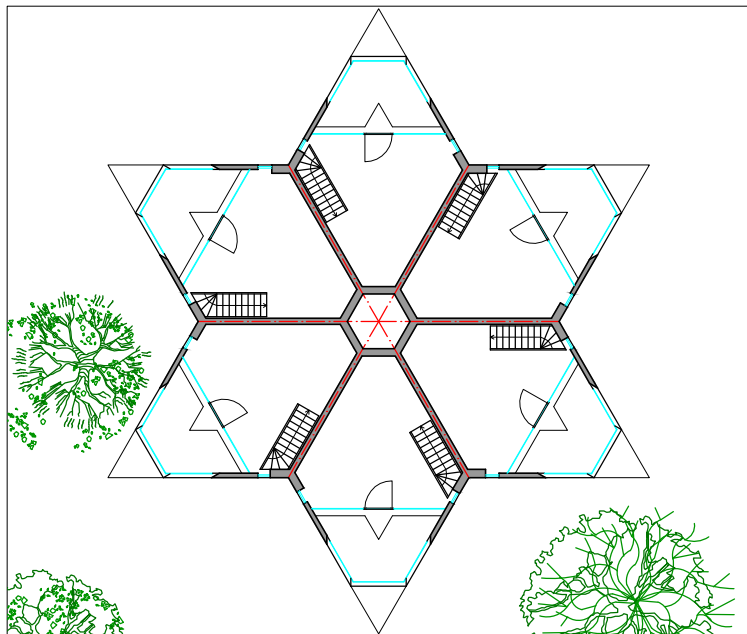
front view



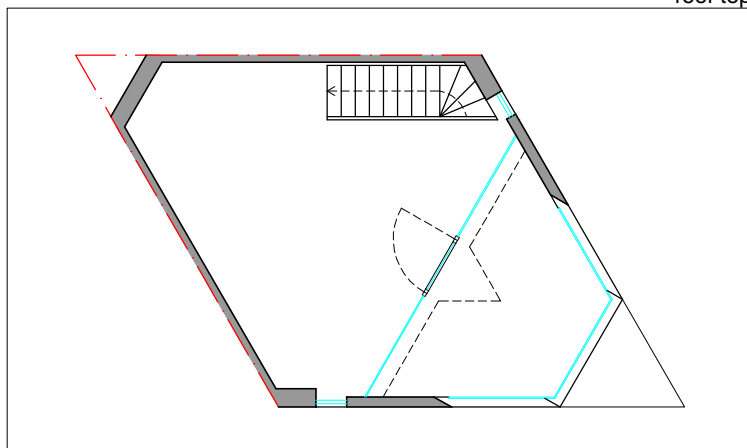
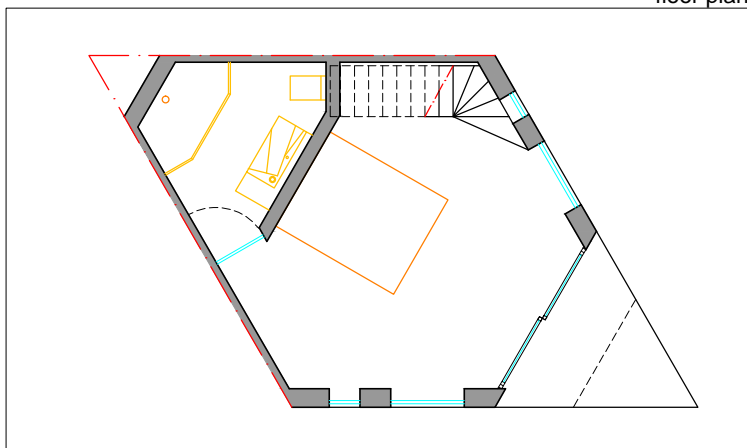
section



floor plan



roof top



TOTAL BUILT UP AREA - 57.00 m<sup>2</sup>

bedroom area - 18.00 m<sup>2</sup>

bathroom area - 5.00 m<sup>2</sup>

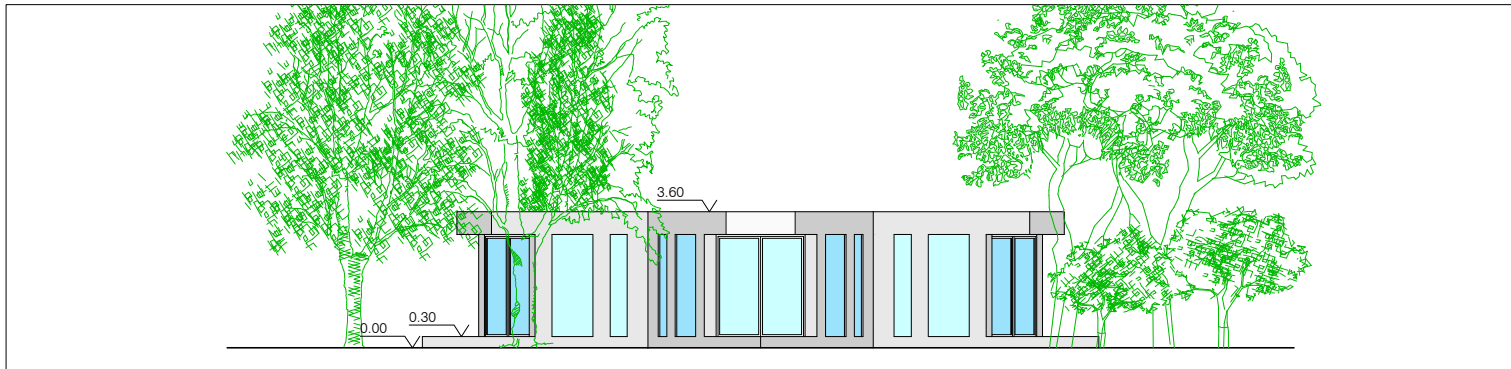
attic area - 17.00 m<sup>2</sup>

balcony area - 7.00 m<sup>2</sup>

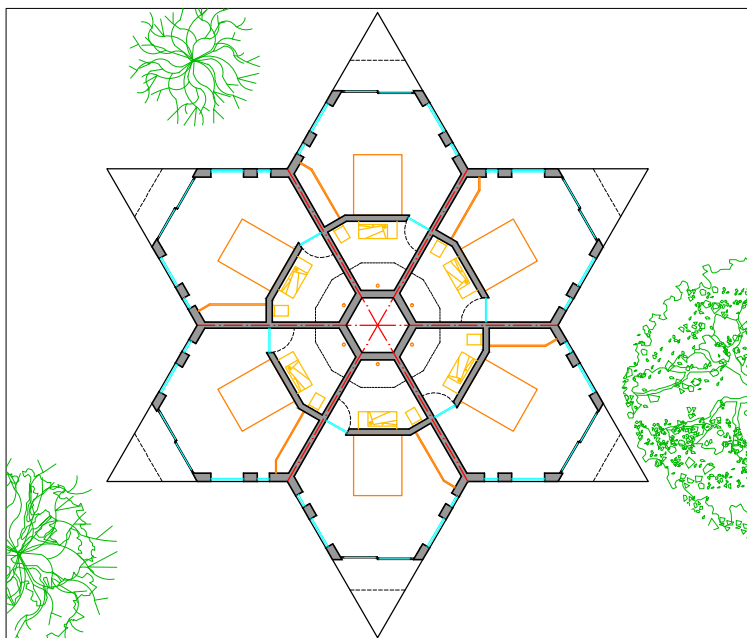
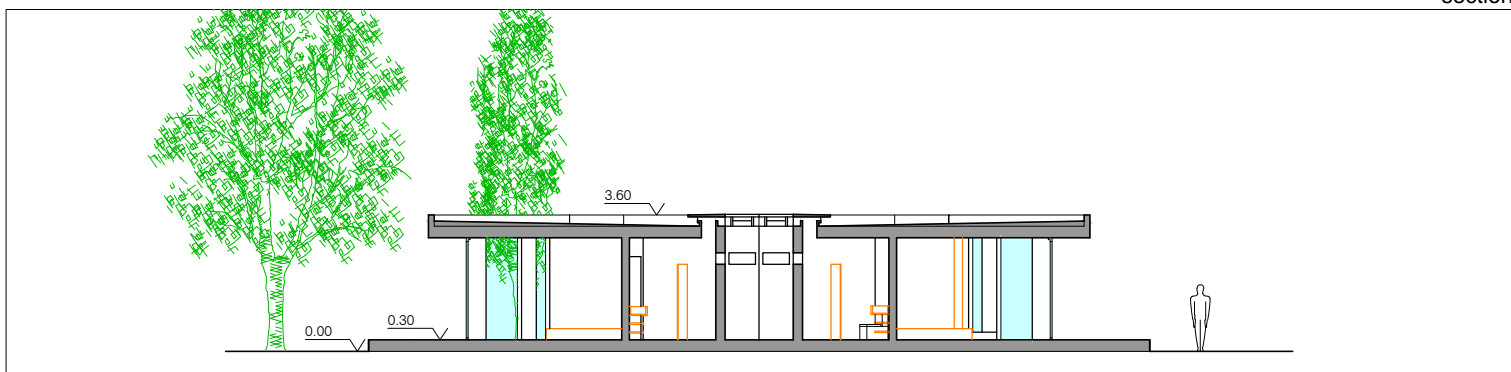
hive cottage



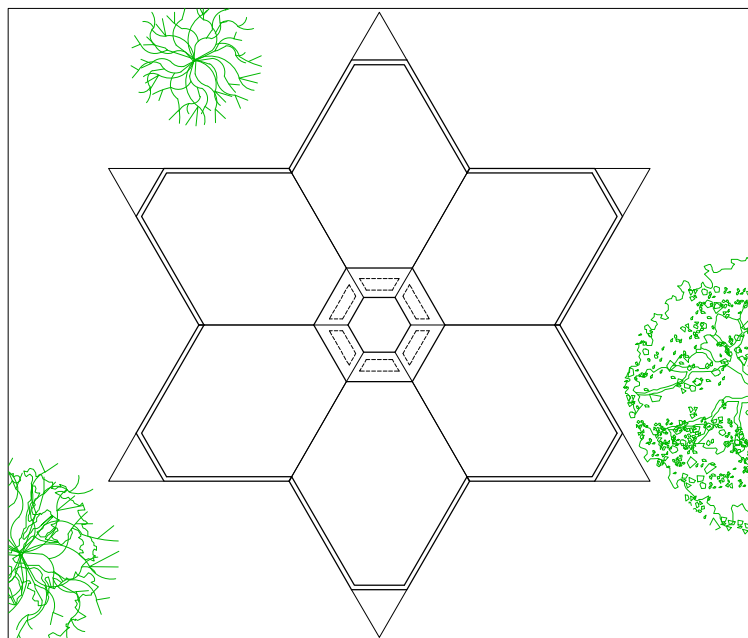
front view



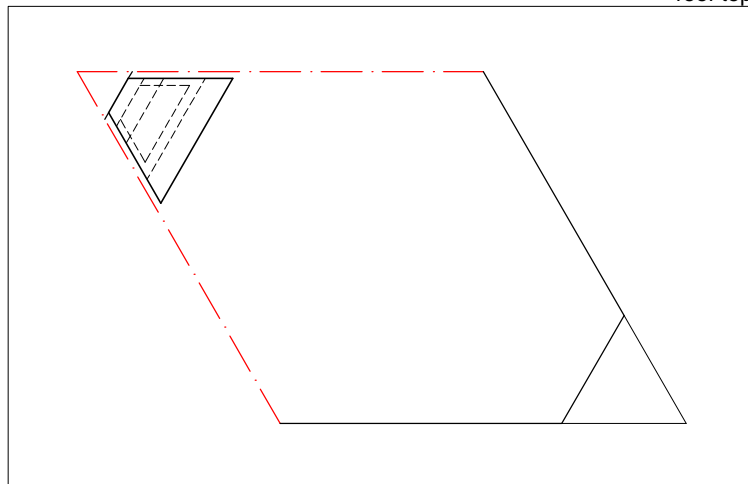
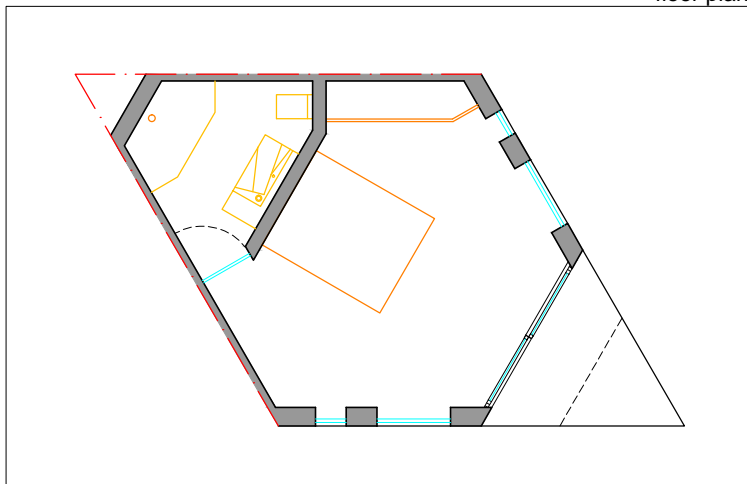
section



floor plan



roof top



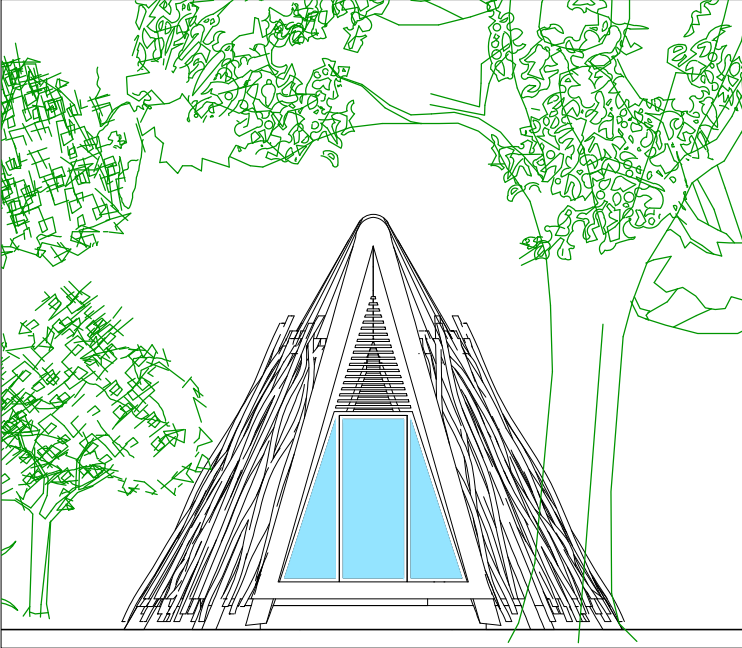
TOTAL BUILT UP AREA - 30.00 m<sup>2</sup>

bedroom area - 18.00 m<sup>2</sup>  
bathroom area - 5.00 m<sup>2</sup>

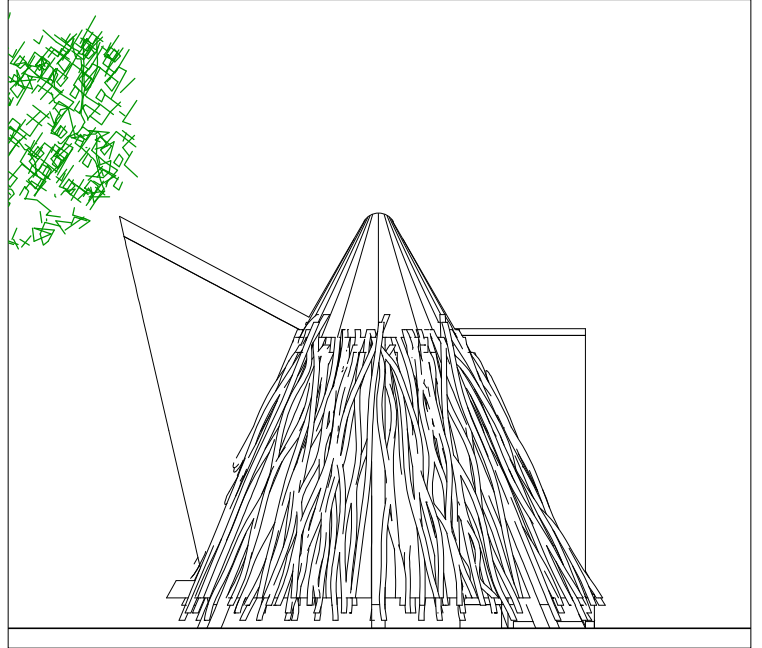
hive studio



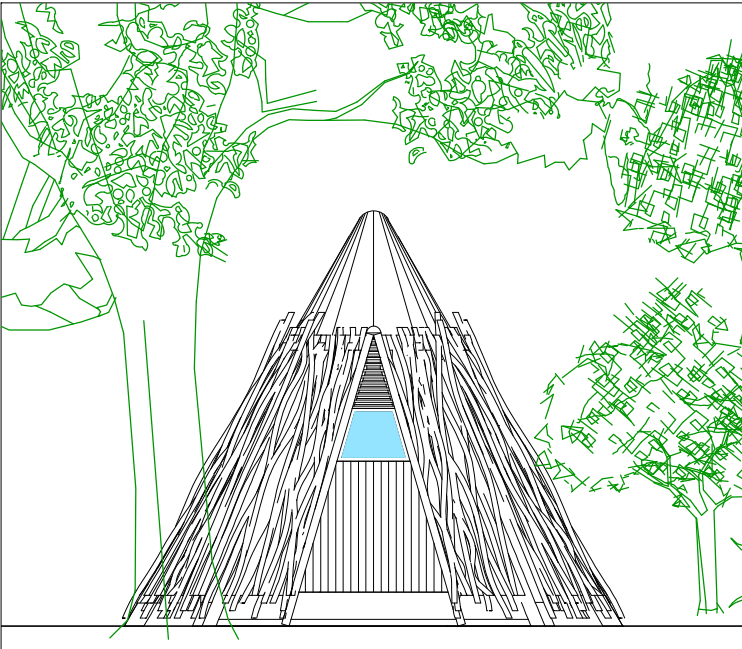
entrance view



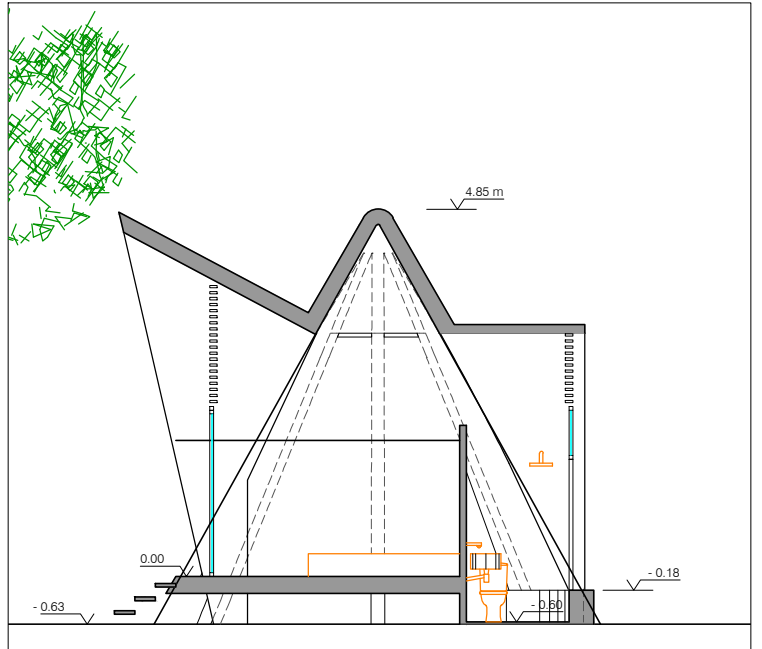
side view



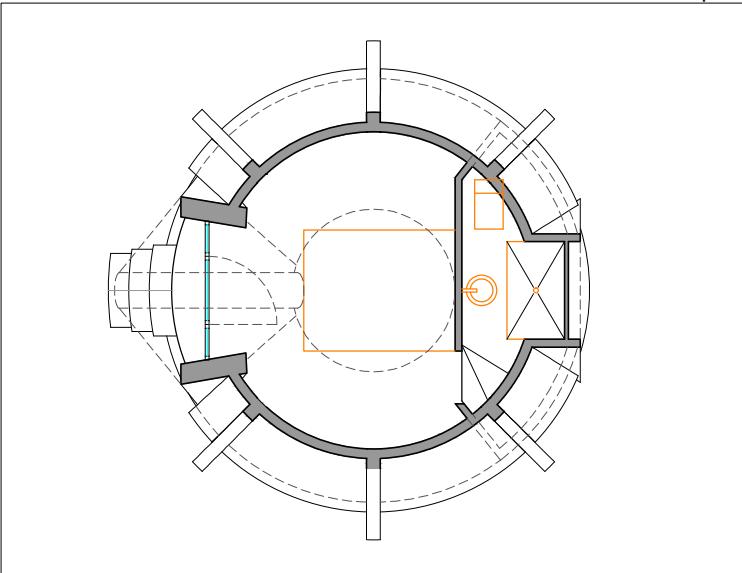
back view



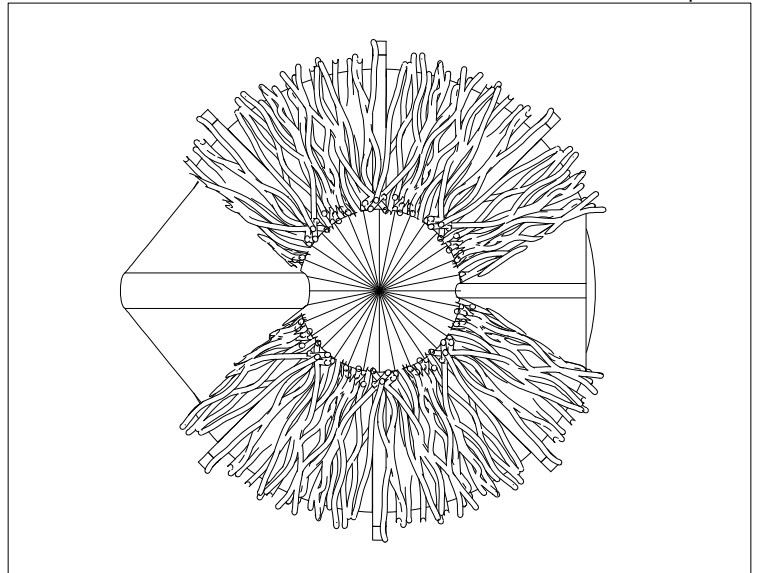
section



floor plan



top view



TOTAL BUILT UP AREA - 27.00 m<sup>2</sup>

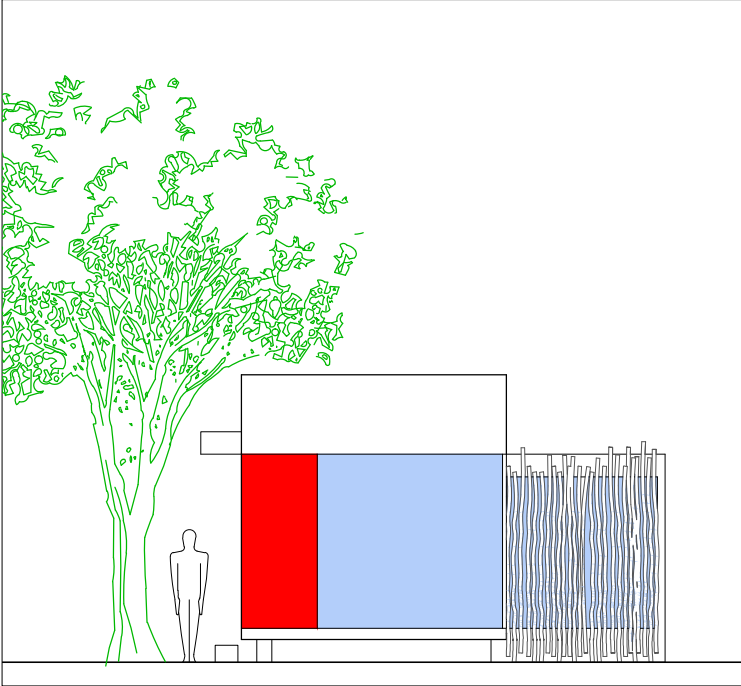
bedroom area - 17.00 m<sup>2</sup>

bathroom area - 4.50 m<sup>2</sup>

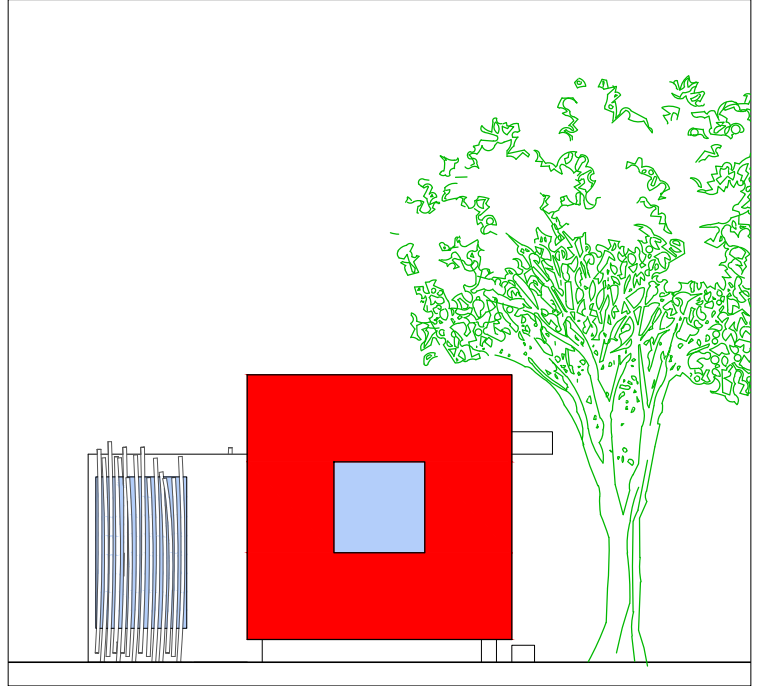
eco cone studio



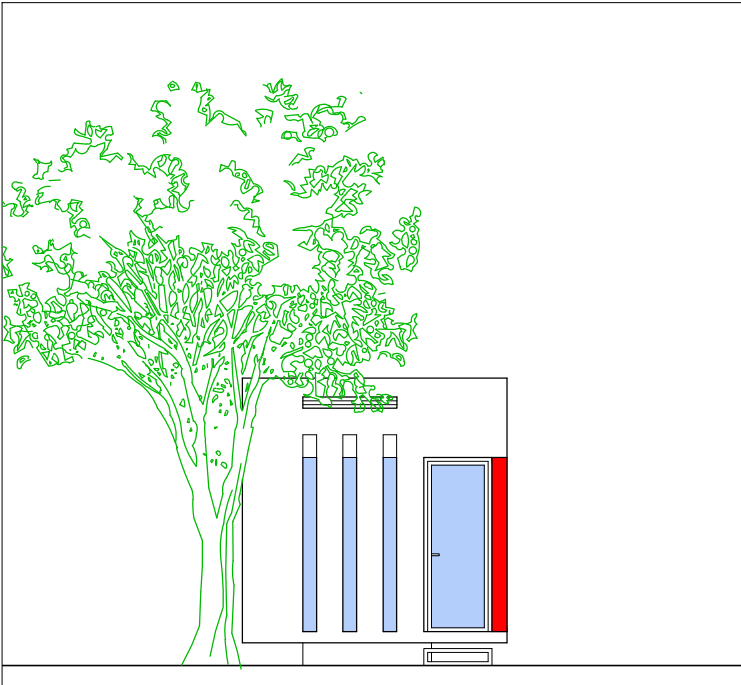
view 1



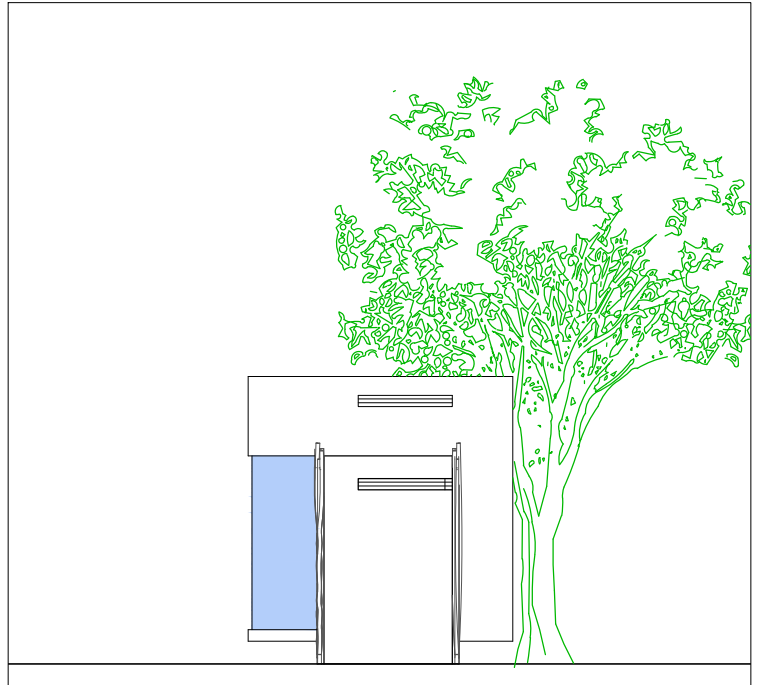
view 2



entrance view

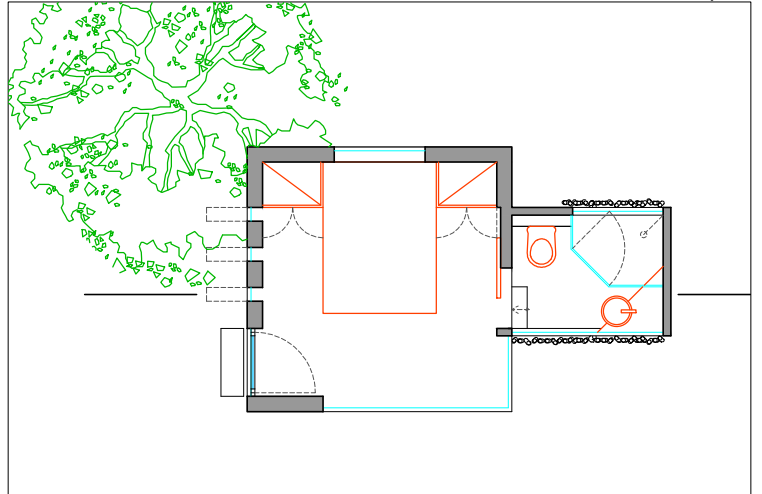
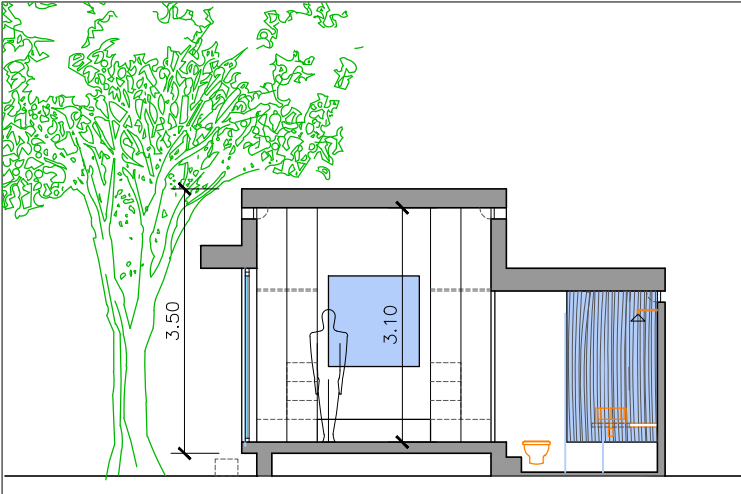


view 3



section

floor plan



TOTAL BUILT UP AREA - 16.00 m<sup>2</sup>

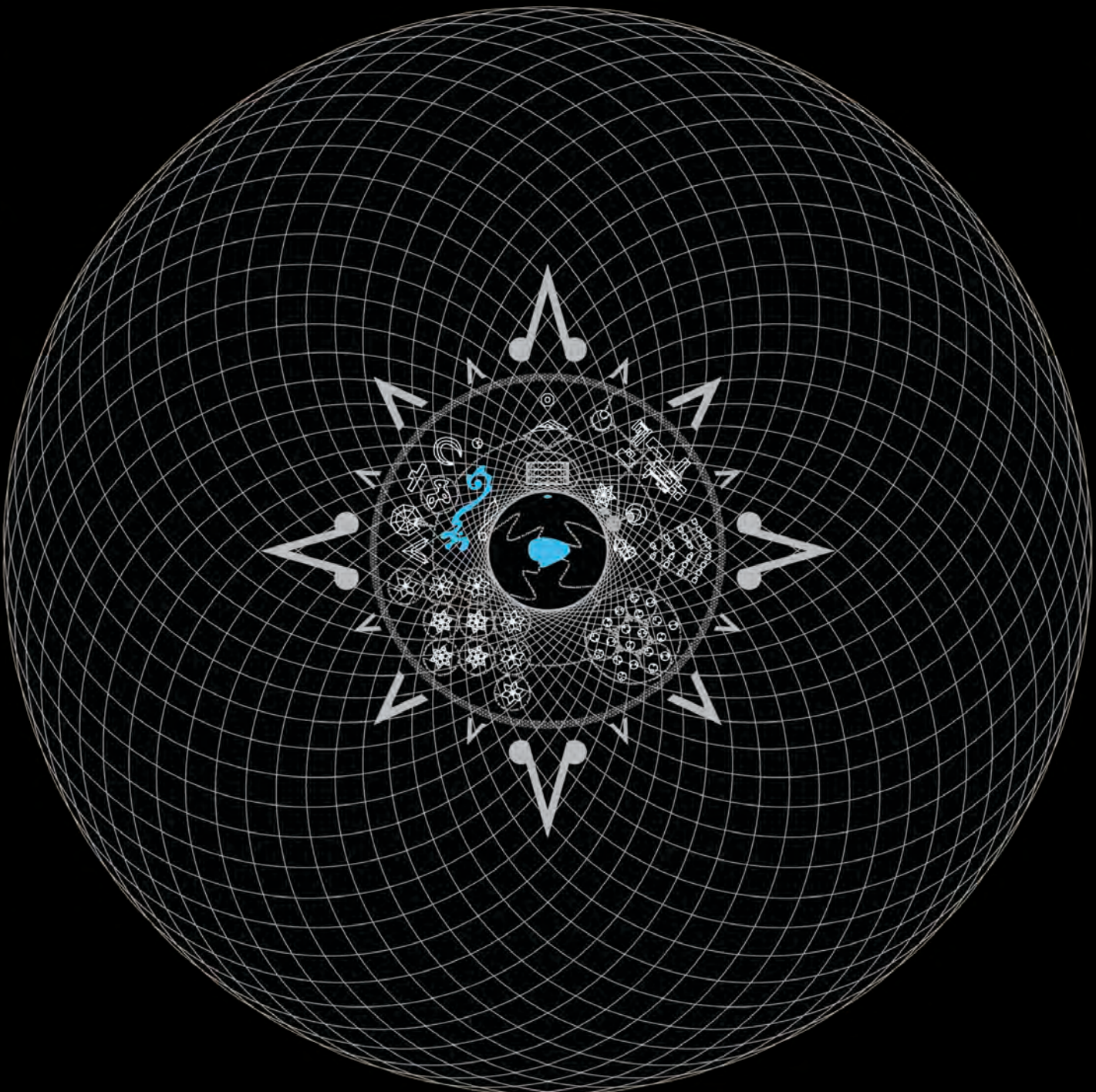
bedroom area - 10.25 m<sup>2</sup>

bathroom area - 3.15 m<sup>2</sup>

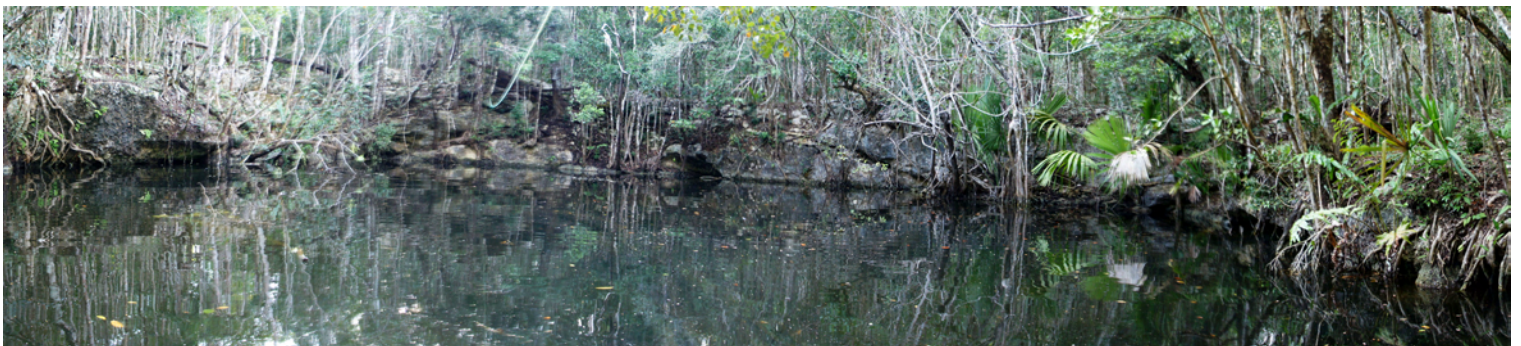
eco cube studio







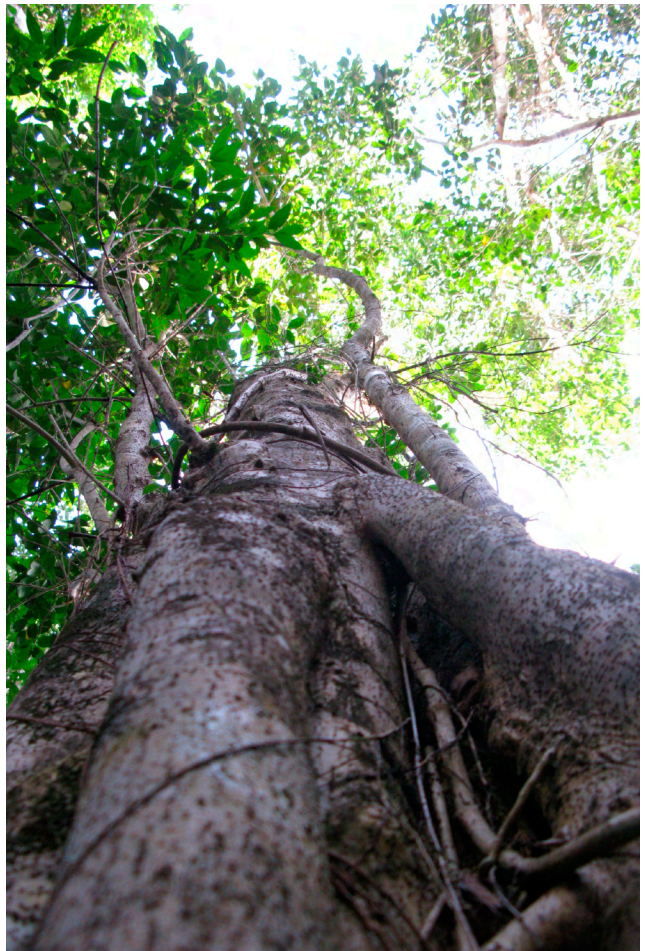
thousand petal lotus  
the buddhafield



**cenote**











OZEN COCOM  
WWW.OZENCOCOM.COM